



SASKATOON GELBVIEH

Friday, MARCH 23, 2012 **Bull & Female Sale**

1pm - SASKATOON LIVESTOCK SALES, SASKATOON SASKATCHEWAN

www.gelbviehworld.com

12th Annual SASKATOON GELBIEH

Friday, MARCH 23, 2012 1pm **Bull & Female Sale**

SASKATOON LIVESTOCK SALES, SASKATOON SASKATCHEWAN

Saskatoon Livestock Sales is located 10 km west of Saskatoon on Highway #14 [towards Biggar].

Offering... **37 Yearling Gelbvieh Herd Sire Prospects**
18 Purebred Open Heifers

- All bulls have been semen tested

ANGUS & MARLENE DAVIDSON
and **WADE & RUTHIE DAVIDSON**

Box 385, Ponteix, SK S0N 1Z0
306/785-4512

Email: davidson421@yahoo.ca

STONE GATE FARM

Darrell & Leila Hickman

RR #2, Vermilion, AB T9X 1Y7
780/581-0077 or 780/581-4510

Email: darrell.hickman@lakelandcollege.ca

FIR RIVER LIVESTOCK

Darcy & Renee Hrebeniuk

Ph: 306/865-2929 Call: 306/865-7859

and David Hrebeniuk

Ph: 306/865-6603

Box 379, Hudson Bay, SK S0E 0Y0

Email: firriver@xplornet.com



www.gelbviehworld.com



Stone Gate Farm
www.stonegatefarms.ca



Darcy, Renee & Colt Hrebeniuk



Dave Hrebeniuk



Wade & Ruthie Davidson



Angus & Marlene Davidson



Darrell, Leila & Family

Welcome...

On behalf of the entire sale group, we would like to invite you to celebrate the 40th Anniversary of Gelbvieh in Canada! We would love to host you and yours Thursday night for some fun, food and hospitality. We would like to congratulate those of you who are reading this, as it means you have prevailed through some hard years. As cattle producers, we are looking at very rewarding times ahead. Prices are better than they have been in years, and the supply does have a limit. This trend looks promising for us as producers so sit back and enjoy the fruits of your hard work the last 10 years!

We feel the offering this year has surpassed all of our expectations. The cattle are bred to be functional, easy maintenance cattle with performance genetics to help pay your bills. On offer you will find bulls that are well matured, semen tested, guaranteed and able to handle the task they have been diligently bred to perform. Whether your needs are for black, red, performance or heifer bull prospects, you will find the best the Gelbvieh breed has to offer in Saskatoon on March 23rd. The females are attractive, well designed lassies who will help move any breeding program forward.

Please accept this as your personal invitation to join us March 22nd for some celebration and March 23rd for sale day! If we can be of any assistance, please do not hesitate to give any of us or our professional sales team a call. The cattle will be on display for your viewing pleasure on Thursday, and we would love to visit with you about the offering at any time prior to the sale. We hope to visit with you sale day, and please join us early for donuts and coffee and lunch prior to the sale. Come celebrate Gelbvieh's 40th, our 12th, and your continued success in this great industry!

The Saskatoon Gelbvieh Bull & Female Sale Consignors

Sale day phones: **403.803.4434 (Don)** **306.865.7859 (Darcy)**
306.625.7820 (Wade) **780.581.4510 (Darrell)**

Special Representatives:

Scott Severtson: Canadian Gelbvieh Association President
Lee Wirgau, Man Sask Gelbvieh Association President
Don Oberg - Ring Service
Bob Blacklock - Ring Service

Accommodations:

**Best Western
Blairmore**

Saskatoon, SK
306.242.2299

Please make your reservations by
March 16th under the Saskatoon
Gelbvieh Bull and Female Sale.

General Information:

TERMS OF SALE: Are cash or cheque at par, payable to the clerks of the Sale on sale day. U.S. funds will be accepted at the current rate of exchange. No release will be given until satisfactory settlement has been made. Full payment shall constitute a final sale and their registration papers will be transferred.

HEALTH: All Sale cattle meet the Canadian Health standards. Foreign buyers are responsible for knowing the current Health standards of their country.

GUARANTEE: All Sale cattle are guaranteed under the terms and conditions of Sale as recommended by the Canadian Gelbvieh Association.

MAIL BIDS: If you are unable to attend the Sale, but wish to make a purchase, please feel free to contact any of the Sales Staff or Don Savage Auctions and your order will be handled in a professional manner.

INSURANCE: Ownership commences to the purchaser as soon as the animal is sold. Insurance agents will be present sale day to look after your insurance requirements.

We would suggest you buy full mortality and fertility insurance for your new bull. A fertile bull can lose the ability to settle cattle therefore, good management of your breeding bulls over all health is very important especially throughout the breeding season. Our warranties do not cover bull injuries or sickness not apparent on sale day.

Although every precaution will be taken to protect the safety and comfort of the buyers neither Don Savage Auctions or the consigners assume any responsibility in these matters and disclaims any liability, legal or otherwise, in the event of an accident or loss of property.

Catalog: Designed & Published by
Kim Matthews, Prime Cut Publishing

Super 8

Saskatoon, SK
306.384.8989

Please make your reservations
by February 22 under the
Saskatoon Gelbvieh Bull and
Female Sale.



Welcome to the 12th Annual Saskatoon Gelbvieh Bull and Female Sale. The cattle industry has been through many trying times in the past eight years, but has the industry ever changed. The strong markets for calves started last fall and has continued to rise, putting the excitement back into the cattle business. The supply of top quality beef is at a shortage throughout the world and these excellent prices will continue for years. The cattlemen that stayed in the business will justly reap the benefits.

Top quality genetics from this sale has always been a given. The Hrebeniuks, Davidsons and the Hickmans select their best for this well established sale. They all have breed leading genetics that you can be assured will raise the top quality, high dollar calves that you as producers deserve to sell at the markets.

Please take the opportunity to visit with these folks prior to the sale. Be sure to visit www.gelbviehworld.com or www.donsavageauctions.com for more information.

If you are interested in purchasing bulls or females on March 23rd, but are unable to be with us sale day, please contact me and your order will be handled in a professional manner.

Yours truly,

Don Savage



Please visit our website at www.gelbviehworld.com or download it at www.donsavageauctions.com

FIR RIVER MOLINA 423Y :: LOT 1



FIR RIVER MOLINA 423Y

POLLED :: PUREBRED 94% :: BULL :: RED
 JANUARY 22, 2011 :: FRL423Y :: CDGV144051

DVE DAVIDSON COGNAC 11N

JRI PLD PETERBILT 285H65 ET
 WM MARTIN'S MISS MADGE 46E
 JRI HEAVY EQUIPMENT 125M3
 ATC GOLD STAR 96E

FRL FIR RIVER TEASE 21T ET

CE	BW	WW	YW	MLK	TM	GEST	DCE	SC	BW	ADJ WW	ADJ YW
106	1.8	34	63	14	31	-0.3	99	0.1	95	788	

Built to perform, long, deep, has a big hip, and is attractive. FRL 423Ys grandam, ATC96E, is one of the cow's we have built our program around. His dam is a good uddered, deep bodied, brood cow. This herd sire prospect will stamp his calves good.

1

FIR RIVER CHARGER 470Y :: LOT 2



FIR RIVER CHARGER 470Y

POLLED :: PUREBRED 94% :: BULL :: RED
 FEBRUARY 2, 2011 :: FRL470Y :: CDGV144058

CE	BW	WW	YW	MLK	TM	GEST	DCE	SC	BW	ADJ WW	ADJ YW
109	1.6	37	65	19	37	-0.3	102	0.4	92	734	

OHF WORLD CLASS 16W

BLB GOODVIEW PLD TITAN 6T
 OHF HAVEN 6T

FRL FIR RIVER ADDISON 39U

DVE DAVIDSON PLD LUCKY 295P
 DVE DAVIDSON MISS JIM 26P

A good red eye appealing bull. Very smooth, long, and deep. He is put together right, hard to fault this guy.

2

FIR RIVER KESSEL 421Y :: LOT 3



FIR RIVER KESSEL 421Y

POLLED :: PUREBRED 94% :: BULL :: RED
 JANUARY 22, 2011 :: FRL421Y :: CDGV143958

CE	BW	WW	YW	MLK	TM	GEST	DCE	SC	BW	ADJ WW	ADJ YW
106	2.0	38	71	24	43	-0.6	101	0.9	97	745	

JRI FULLY EXPOSED 270N83

JRI EXTRA EXPOSURE 285L71 ET
 JRI MS LIFESAVER 270K73

KCB PINTO CREEK NATASHA 16N

MGF GIZ'S BIG KING 7K ET
 CVG CYPRESS VIEW GERSHWYN

Very deep, very thick, and long spined. We have used alot of Fully Exposed over the years, and this is why. A full brother is seeing herd sire duties in our herd. His mother is a no miss cow who always raises the good ones. Two other siblings have sold to Charona Farms and wow...you would be impressed with their replacement pen of heifers.

3



FIR RIVER GETZLAF 455Y ET :: LOT 4

FIR RIVER GETZLAF 455Y ET

POLLED :: PUREBRED 94% :: BULL :: RED
 FEBRUARY 1, 2011 :: FRL455Y :: CDGV144073

This bull is an excellent example of our embryo transfer program. His dam is the elite, immortal ATC96E, whose calves are always well accepted. This herd sire prospect is great haired, long, with lots of rib, thickness, and hip.

Half brothers have sold to McCoy Cattle Company, Les Weibe, and Dan McCaffrey.

DCC RIKHARDS RED 22R
 ATC GOLD STAR 96E

CES DECKA FP 74M ET
 LEF PLD LILLIAN 8N
 ATC GOLD STAR AUSTRIA 10A
 ATC GOLD STAR 21B

CE	BW	WW	YW	MLK	TM	GEST	DCE	SC	BW	ADJ WW	ADJ YW
103	2.9	30	65	18	33	0.0	96	0.1	95	759	

4



FIR RIVER WOODBINE 405Y :: LOT 5



FIR RIVER MOXON 416Y :: LOT 6

FIR RIVER WOODBINE 405Y

POLLED :: PUREBRED 94% :: BULL :: RED
 JANUARY 9, 2011 :: FRL405Y :: CDGV144033

CE	BW	WW	YW	MLK	TM	GEST	DCE	SC	BW	ADJ WW	ADJ YW
104	3.0	38	71	20	39	-0.5	101	0.9	100	703	

JRI FULLY EXPOSED 270N83

JRI EXTRA EXPOSURE 285L71 ET

JRI MS LIFESAVER 270K73

DVE DAVIDSON PETERBILT 7N

JRI PLD PETERBILT 285H65 ET

DVE DAVIDSON MS PLD 9K

Performance Plus. This Fully Exposed son comes from a cow that started it all for us DVE7N. Eye appeal and performance in one package are hard to find, but this guy has got it. He will definitely catch your eye sale day.

5

FIR RIVER MOXON 416Y

POLLED :: PUREBRED 94% :: BULL :: RED
 JANUARY 20, 2011 :: FRL416Y :: CDGV144021

CE	BW	WW	YW	MLK	TM	GEST	DCE	SC	BW	ADJ WW	ADJ YW
109	-0.2	39	76	20	39	-0.3	104	0.3	85	723	

ZTM MCCOY 34R VERDICT 83U

ULL RED JOLT 34R

ZTM MCCOY 95M ESTER 39P

FRL FIR RIVER MISS JEWEL 10P

SLC FREEDOM 178F ET

DVE DAVIDSON MS PLD FAY 118M

This red bull is thick and long. He will put pounds on your calf crop and sire nice replacement females just like his mother.

6

FIR RIVER TRACKER 461Y :: LOT 7



FIR RIVER TRACKER 461Y

POLLED :: PUREBRED 94% :: BULL :: RED
 FEBRUARY 3, 2011 :: FRL461Y :: CDGV143999

This herd bull prospect is a super thick performance bull with extra length and depth. Tracker sells himself. Great phenotype, testicle, and ground pounding performance. You will drive alot of miles to try to find a better bull.

EGL PABST L011 ET

ULL MISS CHERRY 1J

JCGR BAR GT PARADIGM 2H ET
 EGL PHOEBE G374
 CKA WOODLAND SAMUEL 54E
 WLS HURRICANE CHERRY 3G

CE	BW	WW	YW	MLK	TM	GEST	DCE	SC	BW	ADJ WW	ADJ YW
107	3.8	45	78	20	42	0.6	105	-0.5	107	788	

7

FIR RIVER JOBA 484Y :: LOT 8



FIR RIVER JOBA 484Y

POLLED :: PUREBRED 94% :: BULL :: RED
 FEBRUARY 8, 2011 :: FRL484Y :: CDGV144053

CE	BW	WW	YW	MLK	TM	GEST	DCE	SC	BW	ADJ WW	ADJ YW
105	3.2	38	73	18	36	-1.0	98	0.4	92	734	

RID R COLLATERAL 2R

FRL FIR RIVER RADIANCE 80R

JCGR BAR GT FLASHBACK 410M ET
 JCGR BAR GT LONI 27N ET
 MGF CODE RED 6L
 CVG CYPRESS VIEW GERRISA 29G

A real good bull, heavy muscled, long spined, deep bodied, and has a great quarter. 484Y is one of the high gaining bulls in the pen. This guy will put pounds on your calf crop.

8

FIR RIVER KERSHAW 508Y :: LOT 9



FIR RIVER KERSHAW 508Y

POLLED :: PUREBRED 94% :: BULL :: RED
 MARCH 8, 2011 :: FRL508Y :: CDGV144085

CE	BW	WW	YW	MLK	TM	GEST	DCE	SC	BW	ADJ WW	ADJ YW
100	4.7	52	89	25	51	-0.2	100	0.5	98	767	

DVE DAVIDSON PLD EARL 17U

DEG JEMIMA 281J ET

DVE DAVIDSON PLD MARK 194P
 DVE DAVIDSON MS PLD JIM 59S
 POW JETSTREAM 36B
 KGS KERIGLEN ELIZA JANE 72E

This bull is thick and long with a great hair coat. 508Y will sire scale busting calves, and excellent replacement females.

9



FIR RIVER GETZLAF 466Y ET :: LOT 10

FIR RIVER ASTRO 466Y

POLLED :: PUREBRED 94% :: BULL :: RED
 FEBRUARY 3, 2011 :: FRL466Y :: CDGV144044

The only Astro son in our offering. This eye appealing bull will put style and substance into your calf crop. His model dam last year raised one of our high selling bulls to H & S Farming.

JDPD ASTRO 407S

FRL FIR RIVER SPICE GIRL 83R

JDPD ROLEX 151M

HAD PRINCESS OF ALOT 407P

FRL FIR RIVER FREEDOM 47N

DVE DAVIDSON MS PLD FAY 118M

CE	BW	WW	YW	MLK	TM	GEST	DCE	SC	BW	ADJ WW	ADJ YW
103	1.5	46	85	19	42	-3.0	101	0.2	90	756	

10



FIR RIVER HOWARD 419Y :: LOT 11

FIR RIVER HOWARD 419Y

POLLED :: PUREBRED 94% :: BULL :: RED
 JANUARY 22, 2011 :: FRL419Y :: CDGV144057

CE	BW	WW	YW	MLK	TM	GEST	DCE	SC	BW	ADJ WW	ADJ YW
111	1.8	43	78	18	39	0.1	106	-0.2	95	813	

EGL PABST L011 ET

JCGR BAR GT PARADIGM 2H ET

EGL PHOEBE G374

FRL FIR RIVER MISS SISSY 37U

DVE DAVIDSON PLD LUCKY 295P

FRL FIR RIVER SISSY 195 ET

Dark red, long spined, heavy quartered type bull. Comes out of one of the best cow families in our herd. His dam is a model cow with a perfect udder.

11



FIR RIVER TED 489Y :: LOT 12

FIR RIVER TED 489Y

POLLED :: PUREBRED 94% :: BULL :: RED
 FEBRUARY 11, 2011 :: FRL489Y :: CDGV144013

CE	BW	WW	YW	MLK	TM	GEST	DCE	SC	BW	ADJ WW	ADJ YW
111	0.1	42	77	15	36	-0.3	104	0.3	85	730	

SLC MASTERPLAN 512T

SLC MASTER PLAN 134N

SLC MISS BLACK LASS 120H

FRL FIR RIVER WHITNEY 62W

XXB BIG'N'RICH 911P ET

FRL FIR RIVER MISS JEWEL 10P

A good red light birth weighted bull. This guy is soggy and thick. His first calf dam has a perfect udder.

12

FIR RIVER BIG ROCK 440Y :: LOT 13



FIR RIVER BIG ROCK 440Y

HORNED :: PUREBRED 94% :: BULL :: RED
 JANUARY 25, 2011 :: FRL440Y :: CDGV143954

CE	BW	WW	YW	MLK	TM	GEST	DCE	SC	BW	ADJ WW	ADJ YW
111	1.1	34	57	16	33	-0.4	102	0.3	98	849	

OHF RED ROCK 3R JCGR BAR GT SHREK 604L ET
 VDG VAN DEAU NORTHWIND 107J
 FRL FIR RIVER SHADOW 23S ET LWHF FEARLESS 25K
 SFL SLC MS CENTENNIAL 188C

Lots of growth and performance in this red beef machine. Big Rock has the extra length and a touch of extra frame to put extra pounds on his calves. Dam is an excellent uddered cow that always gets the job done.

13

FIR RIVER BALBOA 439Y :: LOT 14



FIR RIVER BALBOA 439Y

POLLED :: PUREBRED 94% :: BULL :: RED
 JANUARY 24, 2011 :: FRL439Y :: CDGV144040

CE	BW	WW	YW	MLK	TM	GEST	DCE	SC	BW	ADJ WW	ADJ YW
111	0.6	32	67	20	36	-0.7	105	0.3	99	729	

ZTM MCCOY 34R VERDICT 83U ULL RED JOLT 34R
 ZTM MCCOY 95M ESTER 39P
 FRL FIR RIVER RED SAVANA 21S JCGR BAR GT LOUIE 2J
 DVE DAVIDSON PLD HELENA 91M

Thick, meaty, deep bodied bull. This high performing bull will definitely put pounds on your calf crop.

14

FIR RIVER MOLSON 463Y :: LOT 15



FIR RIVER MOLSON 463Y

POLLED :: PUREBRED 94% :: BULL :: RED
 FEBRUARY 2, 2011 :: FRL463Y :: CDGV144029

CE	BW	WW	YW	MLK	TM	GEST	DCE	SC	BW	ADJ WW	ADJ YW
107	0.9	35	64	16	33	0.3	99	0.3	90	746	

JRI PLD GRAND PRIX 53G JRI MS PLD SUMMIT 53A41
 FRL FIR RIVER CHERRY 73R JCGR BAR GT LOUIE 2J
 CCF GREAT LAKES KATIE 42K

A well put together bull. Good footed, thickly made, and deep sided. 463Y's dam is a beautiful front pasture type cow

15

FIR RIVER AUSTIN 506Y :: LOT 16



FIR RIVER AUSTIN 506Y

POLLED :: PUREBRED 94% :: BULL :: RED
 MARCH 7, 2011 :: FRL506Y :: CDGV144028

CE	BW	WW	YW	MLK	TM	GEST	DCE	SC	BW	ADJ WW	ADJ YW
103	5.2	51	84	22	47	0.1	99	0.7	110	789	

DVE DAVIDSON PLD EARL 17U DVE DAVIDSON PLD MARK 194P
 DVE DAVIDSON MS PLD JIM 59S
 FRL FIR RIVER BOBBYJO 59R ET JRI PLD GRAND PRIMO 43G5
 ATC GOLD STAR TINA 210H

A big rugged powerful bull here. 506Y is extra thick with a good hair coat. This guy will sire high performing calves and good broody females.

16

FIR RIVER BLACK TOP 406Y

POLLED :: PUREBRED 94% :: BULL :: BLACK
JANUARY 10, 2011 :: FRL406Y :: CDGV143963

CE	BW	WW	YW	MLK	TM	GEST	DCE	SC	BW	ADJ WW	ADJ YW
112	-0.1	34	57	5	22	-1.0	106	0.4	98	713	

BTI EXTRA 2106K ET3

FHG FLYING H EXTRA 150D

BTI LADY GRANITE 2001E ET

DVE DAVIDSON MS BACARDI 17P

DVE DAVIDSON BACARDI 33M

LJL KATI 121M

He is a double black bull with plenty of rib, hair, and testicle. His dam is a super clean, pretty, good uddered cow. This guy will leave you with some tremendous replacement females.

17



FIR RIVER BLACK TOP 406Y :: LOT 17

FIR RIVER RYDER 403Y

POLLED :: PUREBRED 94% :: BULL :: BLACK
JANUARY 5, 2011 :: FRL403Y :: CDGV143962

CE	BW	WW	YW	MLK	TM	GEST	DCE	SC	BW	ADJ WW	ADJ YW
107	-0.5	38	75	15	34	-2.0	103	1.1	75	772	

JRI TOP RECRUIT 254U82

JRI TOP SECRET 253M75 ET

JRI MS COCOA 254S72

RJD MISS IMAGE'S WANDA 108W

SLC MERV 49S

RJD MISS IMAGE 318P

This black bull carries a good hip and length. We are very impressed with the job his sire Top Recruit has done for us. Just like this guy, he is light at birth, and a tremendous growth spread. We have retained a Top Recruit son for our own program.

18



FIR RIVER RYDER 403Y :: LOT 18

FIR RIVER BIG'N'RICH 438Y

POLLED :: PUREBRED 94% :: BULL :: BLACK
JANUARY 24, 2011 :: FRL438Y :: CDGV144042

CE	BW	WW	YW	MLK	TM	GEST	DCE	SC	BW	ADJ WW	ADJ YW
108	1.6	42	82	12	32	-1.2	105	0.5	95	795	

XXB BIG'N'RICH 911P ET

XXB TITUS 880K

EGL G56S

FRL FIR RIVER SURI 46S

SLC FREEDOM 178F ET

TSCC TWIN STAR NARITA 437N

Deep, long, awesome haired black bull. 438's dam has done alot for our program. She is a productive, awesome uddered brood cow. This guy will add style and performance to your calf crop.

19



FIR RIVER BIG'N'RICH 438Y :: LOT 19

FIR RIVER BLACKJACK 446Y

POLLED :: PUREBRED 94% :: BULL :: BLACK
JANUARY 27, 2011 :: FRL446Y :: CDGV144015

CE	BW	WW	YW	MLK	TM	GEST	DCE	SC	BW	ADJ WW	ADJ YW
109	1.9	38	67	20	39	0.4	104	0.3	95	702	

SLC BLACK JACK 48F ET

BTI BARCELONA 2057B

BB MISS 61Y

ELK TAYLOR'S BLUE ICE 711G

MLLC M/L ADVANTAGE 345C

ELK MISS BLACK ICE DB 347B

A good black bull that is deep sided and has a good hair coat. His dam has done a great job for us, and he has longevity bred into him.

20



FIR RIVER BLACKJACK 446Y :: LOT 20

These are the first Gelbvieh Balancers we have ever sold. The Gelbvieh Balancer is derived from two purebred registered parents. One being purebred Gelbvieh, the other being purebred registered Red Angus. Use these two bulls with confidence knowing that they are backed by generations of great genetics.



FIR RIVER CHILLI 451Y :: LOT 21

FIR RIVER RED CHILLI 451Y

POLLED :: BALANCER 75% :: BULL :: RED
 JANUARY 30, 2011 :: FRL451Y :: CDGV144016

Wow, this 3/4 Gelbvieh balancer is an eye catcher. 451 is light at birth and had a huge growth spread from weaning to yearling. He is wide based, thick, stout, long, and sports a tremendous hair coat. His first calf dam did a tremendous job.

SLC MASTERPLAN 512T
 ULL RED OLIVIA 7W

SLC MASTER PLAN 134N
 SLC MISS BLACK LASS 120H
 YY RED YY RAMBLER 322N
 ULL MS OLIVIA 14M

CE	BW	WW	YW	MLK	TM	GEST	DCE	SC	BW	ADJ WW	ADJ YW
111	-0.5	36	66	16	34	-0.4	103		85	822	

21



FIR RIVER PACKER 422Y :: LOT 22

FIR RIVER PACKER 422Y

POLLED :: PERCENTAGE 75% :: BULL :: RED
 JANUARY 22, 2011 :: FRL422Y :: CDGV144017

CE	BW	WW	YW	MLK	TM	GEST	DCE	SC	BW	ADJ WW	ADJ YW
112	-1.5	35	66	16	33	-0.6	103	0.2	86	752	

SLC MASTERPLAN 512T
 SPG SUNNY PLAIN LASS 821U

SLC MASTER PLAN 134N
 SLC MISS BLACK LASS 120H
 VV RAP LOUIE 12R

This bull is moderate framed, thick, and has a deep quarter. This bull is backed by a real good productive cow. FRL 422Y will sire those meaty, soggy calves.

22



FIR RIVER BOOMER 419Y :: LOT 23

FIR RIVER BOOMER 419Y

POLLED :: BALANCER 50% :: BULL :: RED
 FEBRUARY 12, 2011 :: FRL491Y :: CDGV143984

CE	BW	WW	YW	MLK	TM	GEST	DCE	SC	BW	ADJ WW	ADJ YW
	0.6	36	60	19	36				90	664	

DVE DAVIDSON PLD EARL 17U
 AMG RED PASQUA FANCY LADY 34S

DVE DAVIDSON MS PLD JIM 59S
 DTLN RED SSS CACHE 780L
 AMG RED PASQUA FANNY LADY 1K

Boomer is a 50% Gelbvieh Balancer. He has great phenotype, and is deep bodied, long spined, sharp fronted, and has a great hair coat. This guy will you those eye appealing steers and beautiful fancy replacement females. To scared to try a whole Gelbvieh.....try this half gelbvieh.

23

STON STATESMAN 9Y :: LOT 24



STON ENDURANCE 19Y :: LOT 25

STON STATESMAN 9Y

POLLED :: PUREBRED 94% :: BULL :: RED
 FEBRUARY 1, 2011 :: STON9Y :: CDGV142843

CE	BW	WW	YW	MLK	TM	GEST	DCE	SC	BW	ADJ WW	ADJ YW
106	2.1	41	80	22	43	-1.0	101	0.3	90	815	

STON WINSTON 6W

EV HUMDINGER 119M
 STON MS CERTAIN GLOW 2T ET
 DEG PESO 286P
 TIP MISS MOLLY 44M

VV MISS MOLLY 118S

As the picture shows, this is quite a calf! Dark red, hairy, extreme thickness, depth, and raised by a tremendous cow. Great EPD's, great individual. His mother is the 2007 Sweetheart Champion from Agribition, and has not let us down since we purchased her from the Pancoast's. If you need a herd sire that will incorporate outstanding performance and great looks, you will have to drive many hours to find one better. We are extremely pleased to offer this bull, as he is quite simply one of the best bulls we have produced. We are selling full interest and full possession, however we would be interested to discuss terms with the new buyer if at all possible.

24

STON ENDURANCE 19Y

POLLED :: PUREBRED 94% :: BULL :: RED
 FEBRUARY 15, 2011 :: STON19Y :: CDGV142842

CE	BW	WW	YW	MLK	TM	GEST	DCE	SC	BW	ADJ WW	ADJ YW
107	1.2	33	67	19	36	-1.9	102	0.0	88	789	

STON FREELANCE ET 6U

SLC FREEDOM 178F ET
 ATC GOLD STAR 96E
 SLC HEAVY FIRE POWER 444M
 ATC GOLD STAR PLD JUSTINE 6J

VV ROSALIE 98R

This is one powerful individual! Consistency is so important to the bottom line in this industry, and the dam of Endurance has never failed to deliver. Last year a full brother sold to Duane Nelson. This is a definite herd sire prospect who will move a program forward. He will sire consistent cattle, and is a true heifer bull prospect. His mother has produced thus far a \$3500 bred to Wow Cattle Company, \$5500 herd sire to Nelson Gelbvieh, and a \$5500 flush to Fir River Livestock with a few females retained in the Stone Gate herd. Endurance is the real deal, and will help ensure your program is around for the long haul!

25

STON TAURUS 20Y :: LOT 26



STON TAURUS 20Y

POLLED :: PUREBRED 94% :: BULL :: RED
 FEBRUARY 17, 2011 :: STON20Y :: CDGV142832

Every great herd sire is backed by a super cow and strong, consistent cow families. 20Y was mothered by STON 13U, who also raised the \$45,000 valued STON Xterminator 7X owned with Pearson Cattle Company in South Dakota and Severson Land and Cattle. Taurus is being offered because we own an interest in his older brother. Taurus will impress you with his actual numbers, his EPD's, profile and natural presence. He is the complete package who is thick over his top and carries it down through his lower quarter. He is dark red, deep sided and possesses tremendous rib shape and overall balance. If you are looking for a herd sire, Taurus should be one on your list to find on sale day.

CE	BW	WW	YW	MLK	TM	GEST	DCE	SC	BW	ADJ WW	ADJ YW
110	1.7	34	71	17	34	-1.5	102	0.1	92	816	

STON FREELANCE ET 6U

STON MISS JULIE 13U

SLC FREEDOM 178F ET
 ATC GOLD STAR 96E
 EV HUMDINGER 119M
 ATC GOLD STAR PLD JULIE 80J

26

STON PRIME CUT 11Y :: LOT 27



STON PRIME CUT 11Y

POLLED :: PUREBRED 94% :: BULL :: RED
 FEBRUARY 7, 2011 :: STON11Y :: CDGV142845

CE	BW	WW	YW	MLK	TM	GEST	DCE	SC	BW	ADJ WW	ADJ YW
109	0.8	36	73	18	36	-1.1	103	0.2	78	720	

STON WINSTON 6W
 ATC GOLD STAR PLD JULIE 80J

EV HUMDINGER 119M
 STON MS CERTAIN GLOW 2T ET
 GKT 800 800 155E
 ATC GOLD STAR 120B

Prime Cut is another great heifer bull prospect! He was raised by our matriarch ATC 80J, who has produced numerous herd bulls that have sold across Western Canada. You will appreciate his balance and eye appeal, both of which he comes by honestly. His mother and older sister have tremendous udder's and never fail to pull their weight. These genetics have longevity built in, and his mother still has one of the best udders on the place.

27

MKID YUKON 24Y :: LOT 28



MKID YUKON 24Y

POLLED :: PUREBRED 94% :: BULL :: RED
 MARCH 21, 2011 :: MKID24Y :: CDGV143479

CE	BW	WW	YW	MLK	TM	GEST	DCE	SC	BW	ADJ WW	ADJ YW
112	-1.4	27	72	15	28	-1.5	102	0.6	78	691	

DCC RANCHER 39U
 JBM ROSEBUD 18S

LEF RONALD 62R
 DCC PLD BLK RUBY 65L
 JRI PLD FREE AGENT 125J3
 JBM ROSEBUD 21P

This bull is owned by our children and their cousins. He was raised by a great little cow they purchased from their grandfather out of his dispersal. You will appreciate his eye appeal and structural correctness. Yukon has a fresh pedigree and will offer tremendous calving ease in a moderate, thick package. His mother has done a great job with this bull, and we are confident he will do a great job for your operation.

28



STON WAR DRUM 5Y :: LOT 29

STON WAR DRUM 5Y

POLLED :: PUREBRED 94% :: BULL :: RED
 JANUARY 21, 2011 :: STON5Y :: CDGV142840

STON FREELANCE ET 6U

STON LADY INEZ 1W

SLC FREEDOM 178F ET
 ATC GOLD STAR 96E
 SLC MASTER PLAN 134N
 JBM INEZ 24T

CE	BW	WW	YW	MLK	TM	GEST	DCE	SC	BW	ADJ WW	ADJ YW
110	-0.2	33	66	18	35	-2.3	102	0.0	82	813	

War Drum is an exceptionally easy fleshing individual. He was raised by a great first calver who will certainly leave her impact in the future. War Drum has been a performer all year, and carries a tremendous amount of capacity and thickness. If you are looking for a moderate, thick heifer bull War Drum will fit the bill! He stems from a very strong cow family and we have every confidence he will sire those scale busting calves and replacement females that will make attractive, retainable females.

29



STON LIMITED EDITION 7Y :: LOT 30

STON LIMITED EDITION 7Y

POLLED :: PUREBRED 94% :: BULL :: RED
 JANUARY 25, 2011 :: STON7Y :: CDGV142828

CE	BW	WW	YW	MLK	TM	GEST	DCE	SC	BW	ADJ WW	ADJ YW
108	1.7	37	71	17	36	-0.7	100	0.0	90	860	

STON FREELANCE ET 6U

STON MISS BURGESS 11U

SLC FREEDOM 178F ET
 ATC GOLD STAR 96E
 EV HUMDINGER 119M
 VG VALLEY MISS 79M

Limited Edition is a true rancher bull. He will sire stout growth steers calves and females that will have impeccable udders. His overall mass and smooth pattern will impress you. Limited Edition was our heaviest calf at weaning with a whopping 912 actual weight the first week of September. I suggest you look him up sale day, as the name suggests there aren't many with this kind of performance!

30



STON SIGNATURE 16Y :: LOT 31

STON SIGNATURE 16Y

POLLED :: PUREBRED 94% :: BULL :: RED
 FEBRUARY 13, 2011 :: STON16Y :: CDGV142844

CE	BW	WW	YW	MLK	TM	GEST	DCE	SC	BW	ADJ WW	ADJ YW
108	1.5	41	79	20	41	-0.5	102	0.2	86	789	

STON FREELANCE ET 6U

STON MISS PARADEE 2S

SLC FREEDOM 178F ET
 ATC GOLD STAR 96E
 WGG PANTHER 66P
 JBM PARADEE 14N

Where to start...dark red, thick, and a surefire heifer bull! His mother has raised a herd sire for us, Towerview Ranch, and now this guy! He comes loaded with performance, thickness, a great hair coat and is backed by one of our strongest, most profitable cow families...the Paradee's. Signature will ensure you sleep during calving season, and will sire calves that grow with the best of them.

31

WDE DAVIDSON JOYRIDE 9Y :: LOT 32



WDE DAVIDSON JOYRIDE 9Y

POLLED :: PUREBRED 94% :: BULL :: RED
 MARCH 8, 2011 :: WDE9Y :: CDGV143687

WDE DAVIDSON SHOWTIME 10U
 DSL DEEP SANDS RENU 59R

JRI FULLY EXPOSED 270N83
 BLB GOODVIEW SARA 21S
 DSL DEEPSANDS NAVIGATOR 2N
 DSL DEEPSANDS PLD LACY 46L

Bulls like Joyride only come along once in a while. He is a "natural". This good Davidson Showtime son has natural meat, natural thickness and natural doing ability. Cattle-men will draw to him come sale day. Along with being a beef machine he carries an abundance of maternal strength. He is out of a beautiful dam. When you check out his Showtime sisters that are in the sale you will want to own this exciting herdsire prospect. Joyride comes highly recommended. Wade Davidson would like to retain a 50% semen interest in this individual.

CE	BW	WW	YW	MLK	TM	GEST	DCE	SC	BW	ADJ WW	ADJ YW
104	1.6	41	75	22	42	-0.7	100	0.6	82	765	1405

32

WDE DAVIDSON BANNER 1Y :: LOT 33



WDE DAVIDSON BANNER 1Y

POLLED :: PUREBRED 94% :: BULL :: RED
 JANUARY 21, 2011 :: WDE1Y :: CDGV143696

CE	BW	WW	YW	MLK	TM	GEST	DCE	SC	BW	ADJ WW	ADJ YW
105	2.4	43	75	22	43	-0.6	100	0.5	87	709	1427

WDE DAVIDSON SHOWTIME 10U
 WDE DAVIDSON MISS MAPLE 29U

JRI FULLY EXPOSED 270N83
 BLB GOODVIEW SARA 21S
 JC PEMBINA MCLEOD 86M
 DVE DAVIDSON MS PLD SASSY

Wade would like to introduce you to Davidson Banner. Banner brings a great pedigree of exciting genetics with great bulls like Fully Exposed, Montana Kid and the People's Choice Champion of 2002 - Pembina McLeod. This is unique genetic blend that has not been seen in the breed. Banner is very well made, carries loads of meat packed all in the right places. In the Gelbvieh breed we always talk about the bull's dam because "Gelbvieh" are noted to be cow makers. Banner has a very good dam and he will be a cow maker that will make you proud.

33

WDE DAVIDSON PLD JINGLE 3Y :: LOT 34



WDE DAVIDSON PLD JINGLE 3Y

POLLED :: PUREBRED 94% :: BULL :: RED
 JANUARY 23, 2011 :: WDE3Y :: CDGV143698

CE	BW	WW	YW	MLK	TM	GEST	DCE	SC	BW	ADJ WW	ADJ YW
109	1.7	36	66	22	39	-0.6	102	0.9	92	666	1287

DVE DAVIDSON PLD ROMEO 73T
 MD DAVIDSON SAMANTHA 19M

DVE DAVIDSON PLD MARK 194P
 DVE DAVIDSON MS RED WRAP 81R
 DVE DAVIDSON SUPERMAN 100J
 AMD DAVIDSON RAYELLE 22F

Jingle was born with extra pizzazz and will carry that throughout his life. You will really like the pattern of Jingle who was sired by Romeo and out of one of Wade's top producing females. His dam is now 10 years old and still has the udder suspension of a 3 year old. Jingle comes highly recommended to be a cow maker and he carries an awesome set of EPDs. Jingle has a pedigree that is different than many bloodlines in the breed. Give him some serious attention on sale day.

34

AMD DAVIDSON PREMIER 1Y :: LOT 35



AMD DAVIDSON PREMIER 1Y

POLLED :: PUREBRED 94% :: BULL :: RED
 FEBRUARY 4, 2011 :: AMD1Y :: CDGV143691

DVE DAVIDSON PLD ROMEO 73T
 AMD DAVIDSON ALVERA 4S

DVE DAVIDSON PLD MARK 194P
 DVE DAVIDSON MS RED WRAP 81R
 DVE DAVIDSON SUPERMAN 100J
 CVG CYPRESS VIEW JUANITA 43J

CE	BW	WW	YW	MLK	TM	GEST	DCE	SC	BW	ADJ WW	ADJ YW
111	1.1	35	66	22	40	-0.7	103	0.8	90	692	1460

Everyone will be impressed with Davidson Premier; he looks just like his sire Davidson Romeo. Romeo has done a great job in the Davidson breeding program — he has the ability to combine calving ease with growth. Davidson Premier should follow in his sires footsteps and for those cattlemen that like broody females he will sire the same type of good ordered and beautiful females. Bring your trailer and take him home on sale day.

35



WDE DAVIDSON SHOWTIME :: REF. SIRE

WDE DAVIDSON STOCKGROWER 8Y

POLLED :: PUREBRED 94% :: BULL :: RED
 MARCH 5, 2011 :: WDE8Y :: CDGV143686

CE	BW	WW	YW	MLK	TM	GEST	DCE	SC	BW	ADJ WW	ADJ YW
106	2.1	37	75	18	37	-0.4	99	0.7	90	726	1488

WDE DAVIDSON SHOWTIME 10U
 DVE DAVIDSON MS DAZZEL 79R

JRI FULLY EXPOSED 270N83
 BLB GOODVIEW SARA 21S
 CCF GREAT LAKES DAZZLE HER
 DVE DAVIDSON MS PLD 112K

Stockgrower should sire calves that really perform. He would work well on British cattle. This blend will give you those powerful steers like the ones that sold so well last fall. He has extra length and a real strong top line. His genetics will add milk into your replacement females.

36



AMD DAVIDSON PREMIUM 3Y :: LOT 37

AMD DAVIDSON PREMIUM 3Y

POLLED :: PUREBRED 94% :: BULL :: RED
 FEBRUARY 11, 2011 :: AMD3Y :: CDGV143693

CE	BW	WW	YW	MLK	TM	GEST	DCE	SC	BW	ADJ WW	ADJ YW
108	0.9	38	73	22	41	-0.7	100	1.0	84	696	1406

DVE DAVIDSON PLD ROMEO 73T
 AMD DAVIDSON WINFREY 4U

DVE DAVIDSON PLD MARK 194P
 DVE DAVIDSON MS RED WRAP 81R
 JRI FULLY EXPOSED 270N83
 AMD DAVIDSON TAMI LYNN 1S

Davidson Premium is a smart looking son of Romeo. The genetic blend of Romeo and Fully Exposed will work well whether you are a purebred or commercial breeder. This free moving herdsire prospect carries himself well and will be able to get out and cover your cows. Premium is double polled with a moderate birth weight, He has plenty of muscle. Make Premium your pick on sale day.

37

SASKATOON

GELB VieH FEMALES





FIR RIVER DAZZLE 418Y :: LOT 38

FIR RIVER DAZZLE 418Y

POLLED :: PUREBRED 94% :: FEMALE :: RED
 JANUARY 21, 2011 :: FRL418Y :: CDGV144037

EGL PABST L011 ET

DVE DAVIDSON MS DAZZLE 24S

JCGR BAR GT PARADIGM 2H ET
 EGL PHOEBE G374
 CCF GREAT LAKES DAZZLE HER
 DVE DAVIDSON PLD MISSY 62M

CE	BW	WW	YW	MLK	TM	GEST	DCE	SC	BW	ADJ WW	ADJ YW
105	2.8	46	88	17	40	0.2	100	-0.3	90	612	

A real broody heifer here. Her sire Pabst puts performance into his bull calves, and makes his daughters broody just like this gal. 418Y is the type you start cow families with. Definitely hard to part with this heifer.

38



FIR RIVER FOXY 457Y :: LOT 39

FIR RIVER FOXY 457Y

POLLED :: PUREBRED 94% :: FEMALE :: RED
 FEBRUARY 1, 2011 :: FRL457Y :: CDGV144000

39

CE	BW	WW	YW	MLK	TM	GEST	DCE	SC	BW	ADJ WW	ADJ YW
105	1.8	44	80	16	38	-1.8	103	0.5	85	489	

FRL FIR RIVER MADDOX 4U ET DRJ FULL EXPOSURE 013N
 FRL FIR RIVER MERCEDES 1P
 EGL GADGET F1258
 DTJ LADY MARY ANN 43L

A nice made feminine heifer backed by a cow family with phenomenal udders.



FIR RIVER LINDA 521Y :: LOT 40

FIR RIVER LINDA 521Y

POLLED :: PERCENTAGE 75% :: FEMALE :: RED
 APRIL 2, 2011 :: FRL521Y :: CDGV143980

40

CE	BW	WW	YW	MLK	TM	GEST	DCE	SC	BW	ADJ WW	ADJ YW
107	2.7	38	76	22	41	-0.6	102	0.6	90	531	

DVE DAVIDSON PLD EARL 17U DVE DAVIDSON PLD MARK 194P
 DVE DAVIDSON MS PLD JIM 59S
 SLC TOP SHELF 2N
 SPG SUNNY PLAIN LINDA 625S

This is a real good 3/4 blood heifer. Just look at her...she will make a great cow.

FIR RIVER JINNY 402Y :: LOT 41



FIR RIVER JINNY 402Y

POLLED :: PUREBRED 94% :: FEMALE :: RED
 JANUARY 4, 2011 :: FRL402Y :: CDGV143961

JRI TOP RECRUIT 254U82

FRL FIR RIVER SANREBA 96W

JRI TOP SECRET 253M75 ET
 JRI MS COCOA 254S72
 FRL FIR RIVER SANTANA 62S
 DVE DAVIDSON MS REBA 96M

The calves from this heifers sire, Top Recruit, are light at birth and really grow. This heifer is thick and deep.

CE	BW	WW	YW	MLK	TM	GEST	DCE	SC	BW	ADJ WW	ADJ YW
105	0.1	36	74	12	30	-1.3	103	0.9	70	478	

41

FIR RIVER FAYET 441Y :: LOT 42



FIR RIVER FAYET 441Y

POLLED :: BALANCER 50% :: FEMALE :: RED
 FEBRUARY 2, 2011 :: FRL441Y :: CDGV144018

CE	BW	WW	YW	MLK	TM	GEST	DCE	SC	BW	ADJ WW	ADJ YW
1.4	28	55	19	32					85	568	

OHF WORLD CLASS 16W

AMG RED PASQUA FAYET 53S

BLB GOODVIEW PLD TITAN 6T
 OHF HAVEN 6T
 RVCC RED ROYAL HI HO 112M
 AMG RED PASQUA FAYET 12N

Here is a nicely made 50% Gelbvieh Balancer with a great future as a cow. Good haired and thrifty.

42

FIR RIVER OASIS 477Y :: LOT 43



FIR RIVER OASIS 477Y

POLLED :: PUREBRED 94% :: FEMALE :: RED
 FEBRUARY 5, 2011 :: FRL477Y :: CDGV144052

CE	BW	WW	YW	MLK	TM	GEST	DCE	SC	BW	ADJ WW	ADJ YW
112	0.3	32	63	18	34	-0.5	106	0.4	88	547	

OHF WORLD CLASS 16W

FRL FIR RIVER OASIS 75R

BLB GOODVIEW PLD TITAN 6T
 OHF HAVEN 6T
 ARN SIR ARNOLD B92I
 HDS LACEY 27L

A well made heifer that will go on to make an excellent cow.

43



FIR RIVER TANISH 475Y :: LOT 44

FIR RIVER TANISH 475Y

POLLED :: PUREBRED 94% :: FEMALE :: RED
 FEBRUARY 4, 2011 :: FRL475Y :: CDGV143971

OHF WORLD CLASS 16W

FRL FIR RIVER TANISH 43T

BLB GOODVIEW PLD TITAN 6T

OHF HAVEN 6T
 FRL FIR RIVER BIG MAC 55R ET
 TSCC TWIN STAR MISS MATRIX 57

CE	BW	WW	YW	MLK	TM	GEST	DCE	SC	BW	ADJ WW	ADJ YW
105	3.2	44	76	19	40	0.2	101	0.2	90	572	

A well made heifer that will be a good addition to any herd. 475Ys dam has a beautiful udder and has done a great job for us.

44



FIR RIVER JILLI 472Y :: LOT 45

FIR RIVER JILLI 472Y

POLLED :: PUREBRED 94% :: FEMALE :: RED
 FEBRUARY 3, 2011 :: FRL472Y :: CDGV144043

45

CE	BW	WW	YW	MLK	TM	GEST	DCE	SC	BW	ADJ WW	ADJ YW
104	3.9	38	72	20	39	0.3	101	-0.1	90	579	

MGF RIG ROCKER 79U
 RCG JILLI 269J
 FRL FIR RIVER LEGACY 64R ET
 MGF GIZ'S MISS KANADA 2K ET
 JWR GUNSMOKE 32Z
 GFA BERGEN GISELLE 714G

This heifer is sired by MGF Rig Rocker, a bull we were fortunate to buy a piece of. She is deep bodied and super long. We retained a Rig Rocker son to use in our own herd



FIR RIVER SALSA 462Y :: LOT 46

FIR RIVER SALSA 462Y

POLLED :: PUREBRED 94% :: FEMALE :: RED
 FEBRUARY 3, 2011 :: FRL462Y :: CDGV144038

46

CE	BW	WW	YW	MLK	TM	GEST	DCE	SC	BW	ADJ WW	ADJ YW
106	2.3	38	70	17	36	-0.6	103	0.2	90	630	

OHF WORLD CLASS 16W
 FRL FIR RIVER SALSA 18S
 BLB GOODVIEW PLD TITAN 6T
 OHF HAVEN 6T
 JCGR BAR GT LOUIE 2J
 HDS LACEY 27L

A real powerful heifer. She will be a cow that will produce good growthy calves.



FIR RIVER BEAUTI 467Y :: LOT 48

FIR RIVER BEAUTI 467Y

POLLED :: PUREBRED 94% :: FEMALE :: BLACK
 FEBRUARY 3, 2011 :: FRL467Y :: CDGV144064

SLC BLACK JACK 48F ET

DVE DAVIDSON MS BEUTI 38M

BTI BARCELONA 2057B

BB MISS 61Y

LCS DAVIDSON PLD JULIO 432J

DVE DAVIDSON BLK BEUTI 70J

This heifer is pretty and deep bodied whose dam has done an excellent job for us.

CE	BW	WW	YW	MLK	TM	GEST	DCE	SC	BW	ADJ WW	ADJ YW
115	-0.9	29	53	16	31	-0.3	107	0.5	80	417	

41



FIR RIVER WYNONA 481Y :: LOT 45

FIR RIVER WYNONA 481Y

POLLED :: PUREBRED 94% :: FEMALE :: RED
 FEBRUARY 8, 2011 :: FRL481Y :: CDGV144009

CE	BW	WW	YW	MLK	TM	GEST	DCE	SC	BW	ADJ WW	ADJ YW
106	0.9	44	77	17	39	-0.3	101	0.3	75	562	

SLC MASTERPLAN 512T

RJD HOLLY'S WYNONA 99W

Moderate, pretty, and sound this heifer will make a great cow.

SLC MASTER PLAN 134N
 SLC MISS BLACK LASS 120H
 SLC MERV 49S
 CES DECKA HOLLY 68

45



SLC MASTERPLAN 512T :: REF
 SIRE OF SEVERAL FIR RIVER LOTS

SLC MASTERPLAN 512T

POLLED :: PUREBRED 94% :: BULL :: RED
 DECEMBER 28, 2007 :: SLC 512T :: CDGV129173

CE	BW	WW	YW	MLK	TM	GEST	DCE	SC	BW	ADJ WW	ADJ YW
112	-0.2	42	72	18	39	-0.3	104	-0.1	86	697	1141

SLC MASTER PLAN 134N

SLC MISS BLACK LASS 120H

SLC LATIGO 118L
 BTI MS CHARLA 2191F
 XZR C342 (STUBBY)
 SLC BLACK LASS 98D



WDE DAVIDSON LADY SELENA 20Y :: LOT 49

WDE DAVIDSON LADY SELENA 20Y

POLLED :: PUREBRED 94% :: FEMALE :: RED
 APRIL 10, 2011 :: WDE20Y :: CDGV143690

An opportunity is knocking if you would like to become a purebred breeder or if you are a breeder and would like to add some awesome Davidson Showtime genetics. When you take a look at Lady Selena take a moment and check out Davidson Joyride in the bull pen. Her dam is a paternal sister to Joyride. Lady Selena's dam is a picture cow; she has eye appeal, a great udder and super genetics running deep in her pedigree.

WDE DAVIDSON SHOWTIME 10U

WDE DAVIDSON HANNA 12T

JRI FULLY EXPOSED 270N83
 BLB GOODVIEW SARA 21S
 DVE DAVIDSON MR RED 111R
 DSL DEEP SANDS RENU 59R

CE	BW	WW	YW	MLK	TM	GEST	DCE	SC	BW	ADJ WW	ADJ YW
108	1.4	37	70	23	42	-0.7	101	0.7	84	691	1184

49



WDE DAVIDSON LADY SERENA 2Y :: LOT 50

WDE DAVIDSON LADY SERENA 2Y

POLLED :: PUREBRED 94% :: FEMALE :: RED
 JANUARY 22, 2011 :: WDE2Y :: CDGV143697

CE	BW	WW	YW	MLK	TM	GEST	DCE	SC	BW	ADJ WW	ADJ YW
106	1.7	42	78	20	41	-0.7	100	0.9	80	661	880

WDE DAVIDSON SHOWTIME 10U

WDE DAVIDSON SUNSET 6W

JRI FULLY EXPOSED 270N83
 BLB GOODVIEW SARA 21S
 DVE DAVIDSON PLD ROMEO 73T
 DVE DAVIDSON MS DAZZEL 79R

Lady Serena comes directly out of the heart of an excellent pen of heifers sired by Davidson Showtime. She is a broody young female who will catch your eye. Double polled, good growth and a solid genetic makeup will make Lady Serena a good choice on sale day.

50



WDE DAVIDSON LADY SHANIA 4Y :: LOT 51

WDE DAVIDSON LADY SHANIA 4Y

POLLED :: PUREBRED 94% :: FEMALE :: RED
 JANUARY 29, 2011 :: WDE4Y :: CDGV143699

CE	BW	WW	YW	MLK	TM	GEST	DCE	SC	BW	ADJ WW	ADJ YW
110	0.2	39	72	22	41	-1.0	101	0.8	77	637	

WDE DAVIDSON SHOWTIME 10U

AMD DAVIDSON JULIET 15W

JRI FULLY EXPOSED 270N83
 BLB GOODVIEW SARA 21S
 DVE DAVIDSON PLD ROMEO 73T
 AMD DAVIDSON CHIC 6S

Lady Shania is destined to be a show pasture female. She has a beautiful head, a clean front end blended together with meat and style. She would look good on a show halter. Her dam Juliet is also a very snazzy young female with a pretty udder. Lady Shania is the complete package and worth your full attention.

51

WDE DAVIDSON LADY REQUEL 5Y :: LOT 52



WDE DAVIDSON LADY REQUEL 5Y

POLLED :: PUREBRED 94% :: FEMALE :: RED
 FEBRUARY 1, 2011 :: WDE5Y :: CDGV143700

CE	BW	WW	YW	MLK	TM	GEST	DCE	SC	BW	ADJ WW	ADJ YW
109	1.5	33	65	23	40	-0.5	105	0.5	85	600	

WDE DAVIDSON SHOWTIME 10U JRI FULLY EXPOSED 270N83
 BLB GOODVIEW SARA 21S
 KCB PINTO CREEK MADONNA 87M AMD DAVIDSON BLEND 11J
 CVG CYPRESS VIEW EYEBROW 38E

Here is another exciting Davidson Showtime heifer. She might be the best one in the pen as she is as pretty as a picture. She will become an awesome cow. Her dam has never missed making the good ones. Put a star beside Lady Requel and do your best to take her home on sale day.

52

WDE DAVIDSON LADY JEWEL 7Y :: LOT 53



WDE DAVIDSON LADY JEWEL 7Y

POLLED :: PUREBRED 94% :: FEMALE :: RED
 FEBRUARY 4, 2011 :: WDE7Y :: CDGV143685

CE	BW	WW	YW	MLK	TM	GEST	DCE	SC	BW	ADJ WW	ADJ YW
104	2.1	43	77	21	43	-0.6	99	0.6	80	566	1004

WDE DAVIDSON SHOWTIME 10U JRI FULLY EXPOSED 270N83
 BLB GOODVIEW SARA 21S
 WDE DAVIDSON CARRY ANNE 11U JC PEMBINA MCLEOD 86M
 DSL DEEP SANDS RENU 59R

Everyone will be pleased to have a replacement pen of Davidson Showtime heifers. Lady Jewel is a perfect example; she is pleasing to the eyes. Her dam, Davidson Carry Anne, is a direct daughter of the 2002 People's Choice Champion Bull Pembina McLeod. Her grandmother, Deep Sands Renu 59R, is the dam of Davidson Joyrider 9Y. Genetics like this make Lady Jewel a perfect choice to add into your program,

53



DVE DAVIDSON PLD ROMEO :: REF
 SIRE OF SEVERAL DAVIDSON LOTS

DAVIDSON PLD ROMEO 73T

POLLED :: PUREBRED 94% :: BULL :: RED
 FEBRUARY 12, 2007 :: DVE 73T :: CDGV120748

CE	BW	WW	YW	MLK	TM	GEST	DCE	SC	BW	ADJ WW	ADJ YW
113	-0.8	42	77	23	44	-1.1	101	1.2	75	814	1484

DAVIDSON PLD MARK 194P DAVIDSON BACARDI 33M
 DAVIDSON PLD TAMMI 82L
 DAVIDSON MS RED WRAP 81R DAVIDSON RED WRAP 26G
 HAG MISS REDKNIGHT 155D

WDE DAVIDSON LADY MADALENE 16Y

POLLED :: PUREBRED 94% :: FEMALE :: RED
 MARCH 30, 2011 :: WDE16Y :: CDGV143688

CE	BW	WW	YW	MLK	TM	GEST	DCE	SC	BW	ADJ WW	ADJ YW
104	2.8	45	78	22	44	-0.8	101	0.6	89	720	1014

WDE DAVIDSON SHOWTIME 10U JRI FULLY EXPOSED 270N83
 BLB GOODVIEW SARA 21S
 DVE DAVIDSON MS PLD SASSY MCFG MONTANA KID 50J ET
 HAG 38G

Wade Davidson is bringing the very best of his 2011 replacement heifers to the Saskatoon sale. Lady Madalene is one of those gals that you can take home and start producing excellent progeny. She is a long powerful female that looks just like her mother. Gelbvieh females like her have given the Gelbvieh breed the reputation of great mama cows. You can buy Lady Madalene with confidence that you are getting the best genetics available.

54

WDE DAVIDSON LADY GINGER 21Y

POLLED :: PUREBRED 94% :: FEMALE :: RED
 MARCH 30, 2011 :: WDE21Y :: CDGV143689

CE	BW	WW	YW	MLK	TM	GEST	DCE	SC	BW	ADJ WW	ADJ YW
109	1.2	32	71	23	42	-0.7	101	0.8	87	610	1082

DVE DAVIDSON PLD ROMEO 73T DVE DAVIDSON PLD MARK 194P
 DVE DAVIDSON MS RED WRAP 81R
 BLB GOODVIEW SARA 21S AMD DAVIDSON SUPREME 4P
 BLB GOODVIEW PLD SARAH 8N

Lady Ginger is a fast growing daughter of Davidson Romeo. She has excellent weaning and yearling weights. This broody young female has plenty of length and capacity. Romeo daughters have great udders and go one to be very productive females.

55



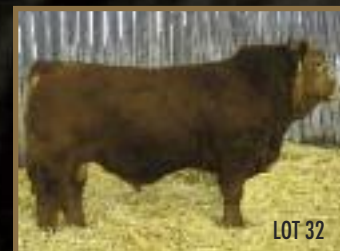
HUDSON BAY CO-OP AGRO DEPT.
 Opening April 2012
 Hudson Bay SK.
 306-865-2288
 Call us for all your Feed Needs
 Horse, Cattle, Sheep and Pet

BULL BREEDING GUARANTEE

- All guarantees are between the buyer and the seller.
- All bulls offered and sold, except calves at side, are guaranteed breeders irrespective of age. All bulls after reaching the age of 15 months must be capable of settling 7 head or 75% of the eligible normal healthy breeding age females he is running with for a 90 day period, whichever is the lesser.
- No guarantee regarding the freezing ability of a bull's semen is made or implied in the sale of a bull unless covered specifically in a written contract.
- In the case of a complaint regarding a bull's breeding guarantee the buyer wishes to enforce the provisions of the Code shall report the same in writing to the seller enclosing a report prepared by a licensed veterinarian within 6 months of purchase or the time the bull reaches the age of 15 months whichever occurs later. The bull shall be returned to the seller at the buyer's expense. The seller may replace the bull with a bull of equal quality or refund the purchaser's price of the bull or he may attempt to prove the bull a breeder under the terms of this clause within 6 months. If the bull is proven to be a breeder within the 6 months provided he shall be returned by the seller to the buyer and the buyer's expense. If he is not proven to be a breeder then replacement or at the option of a seller a refund is mandatory. Under no circumstances will a seller be liable for more than the purchase price of the animal sold.

Don Savage Auctions

108 Flett Drive, Airdrie, Alberta T4B 1N2
Phone: 403/948-3520 Fax: 403/948-2917
www.donsavageauctions.com
email: don@donsavageauctions.com



Time Sensitive Material

www.gelbviehworld.com