



7th Annual  
**HIGHLAND  
BULL SALE**

**MARCH 1 PM**

**20** HIGHWOOD LIVESTOCK AUCTION  
HIGH RIVER, ALBERTA  
**2010**

**LIMOUSIN  
AND  
ANGUS**

**"They have made their way by the way they are made"**





**Selling...**

**53 Limousin Bulls**

**16 Angus Bulls**

- Red & Black Polled Purebreds
- Lim-Flex
- Yearlings & 2 Year Olds

**Free Delivery...**  
up to 300 miles

**HIGHLAND  
Stock Farms**

**Rob & Marci Matthews**

P.O. Box 732, Bragg Creek, AB T0L 0K0  
Ph: 403-949-2510 • Cell: 403-585-8660  
email: highlandstockfarms@davincibb.net

**Tim & Kim Matthews**

Box 19, Site 5, RR#2, Olds, AB T4H 1P3  
Ph: 403-556-1136 • Cell: 403-556-5744  
email: highlandstockfarms@airenet.com



**Rob, Marci, Amanda & Laura**



**Tim, Kim, Cassie, Caitlyn & Logan**



**Herdsmen  
Kyle O'Neill  
403-559-8533**

**Breeding Angus Seedstock Since 1933 • Breeding Limousin Seedstock Since 1970**



### Auctioneer

Dan Skeels • 403-843-4756

### Ring Service

Rod McLeod • 403-932-4622 • Bob Dyck • 403-585-4551

### Sale Location

Highwood Livestock Auction/Southern Alberta Livestock Exchange (SALE) is located south of Calgary on Hwy #2. **Please note that there is a new entrance into the facility!** The entrance is 1 mile south of the old entrance.

### Sale Consultants

**Venture Livestock** - Wayne Burgess 403-813-8416

**Bouchard Livestock** - Scott Bohrsen 403-370-3010

Brian Bouchard - 403-813-7999

**Highwood Livestock Auction/Southern Alberta**

**Livestock Exchange (SALE)** - 403-652-3343

Bill Perlich • 403-540-1884 • Allan Lively • 403-627-7776

### Insurance

There will be an insurance representative present sale day.

We recommend Heather Barr 780-853-7067

### Viewing of the Bulls

Viewing of the bulls will be most welcome at any time prior to the sale. All bulls are housed at Cattleland Feedyards, Strathmore, AB.

### Terms & Conditions

All bulls sell under the Standard Breeders's Guarantee and Guidelines recommended by the Canadian Limousin Assoc.

Copies are available upon request.

### Lunch

Complimentary lunch will be served at 12 noon

### Board on Sale Bulls

We can keep the bulls until delivery, however, these bulls must be insured.

### Absentee Buyers Option

If you are unable to attend the sale, we have a "Absentee Buyers Option" that is Satisfaction Guaranteed! Please contact Rob or Tim Matthews or one of our sale consultants.

We would be glad to discuss the bulls and your needs to try and find a bull or bulls that fit your program. If we deliver a bull that you do not like - you will not own him.

### Breed EPD Averages

**ANGUS** - BW: 3.0, WW: 40, YW: 71, Milk: 17, TM: 37

**LIMOUSIN** - Gest: -1.0, CE:7.1, BW: 1.9, WW: 41.9, YW: 78.5, Milk: 20.2, MCE: 2.9, SC: 0.3, DOC: 14.5, STAY: 17.2

### EPDs & Igenity Information

The information printed in the catalog is known to be true and accurate as provided by the Canadian Limousin Association and Igenity Labs. Any changes to the information and results after the catalog is printed is the doing of the individual organizations.

*All updated information including sale day weights and scrotal circumferences will be available sale day on a sale supplement sheet. All bulls will be Semen Tested.*

## Welcome To Our 7th Annual Limousin & Angus Bull Sale!

*On behalf of everyone at Highland Stock Farms I would like to welcome you to our 7th Annual Bull Sale. We feel that the bull offering gets better every year, and this year is no exception. You will notice as you thumb through the catalog that the number of homozygous black and homozygous polled bulls have increased substantially. Through this process of testing for the homozygous traits we have once again included the carcass data collected through the Igenity testing. We are striving to give you the most accurate and up to date information in order to provide you the buyer more predictability and consistency in your calf crop.*

*Cattleland Feedyards did an exceptional job once again on feeding out the bulls and having them in ideal rancher condition to go out and work for you. With calving season in full swing for some and just around the corner for others, we know your time is limited. If you are unable to make it sale day feel free to view the bulls at Cattleland anytime prior to the sale. All yearling bulls are located in pen # C34, 2 Year Old Limousin bull are in pen # C36 and the 2 Year Old Angus bulls can be found in pen # D45. The bulls will be arriving at Highwood on March 18 and will be available at that location for your appraisal. If you require any other assistance Rob or I as well as any of the sale consultants would be happy to assist you with any questions or to handle any sale day absentee bids, we guarantee you will be satisfied with your purchases. We look forward to seeing our many repeat buyers as well as many new faces on the 20th in High River!*

*Tim Matthews*



# HIGHLAND

## Yearling-Limousin Bulls

**1 HSF WORKFORCE**

3 JANUARY 2009 • TCM 7W • CXM4073188  
 BLACK • 71% • DOUBLE POLLED

RPY PAYNES SIGNAL 6S ROMN JUSTICE  
 CPM0177171 GREENWOODPOLLEDHIPPIYHOP

HSF TEQUILA SUNRISE HIGHLAND NEMO  
 CXF4072664 ANGUS

BW	Adj.WW	Adj.YW	EOT Wt/Feb 1	DAM
89	540	1022	1003	2

EPD'S	Gest	CE	BW	WW	YW	MCE	Mik	TM	SC	DOC
-1.2	9.9	0.8	35.1	64.2	2.6	18.2	35.8	0.5	12.3	



**1** HSF Workforce

**2 HSF WARRIOR**

11 JANUARY 2009 • TCM 25W • CPM0195886  
 DOUBLE BLACK • 92% PUREBRED • HOMO POLLED

CARROUSELS NASDAQ AUTO BLACK DAKOTA 129J  
 CPM1732103 CARROUSELS JAMAICA

HSF RISKY LIZ HIGHLAND MILESTONE  
 CPF0176143 RPY SHANIA

BW	Adj.WW	Adj.YW	EOT Wt/Feb 1	DAM
101	573	1159	1185	4

EPD'S	Gest	CE	BW	WW	YW	MCE	Mik	TM	SC	DOC
-0.5	4.3	4.2	44.0	77.8	1.9	16.3	38.3	0.6	4.9	

**HOMOZYGOUS POLLED**



**3** HSF Wanna Rumble

**3 HSF WANNA RUMBLE**

18 JANUARY 2009 • TCM 48W • CPM0195831  
 BLACK • 94% PUREBRED • POLLED

RPY PAYNES SIGNAL 6S ROMN JUSTICE  
 CPM0177171 GREENWOODPOLLEDHIPPIYHOP

HIGHLAND NILA EXLR POLLED AUSTIN 265J  
 CPF0161181 NP MISS

BW	Adj.WW	Adj.YW	EOT Wt/Feb 1	DAM
104	535	981	1008	6

EPD'S	Gest	CE	BW	WW	YW	MCE	Mik	TM	SC	DOC
-0.3	6.1	3.4	45.3	80.1	3.1	21.8	44.5	0.5	11.5	



**4** HSF White Knight

**4 HSF WHITE KNIGHT**

20 JANUARY 2009 • TCM 51W • CXM4073190  
 BLACK • 71% • HOMO POLLED

RPY PAYNES SIGNAL 6S ROMN JUSTICE  
 CPM0177171 GREENWOODPOLLEDHIPPIYHOP

HSF TOUCH TOO MUCH EXLR POLLED AUSTIN 265J  
 CXF4072659 ANGUS

BW	Adj.WW	Adj.YW	EOT Wt/Feb 1	DAM
97	636	1055	1012	2

EPD'S	Gest	CE	BW	WW	YW	MCE	Mik	TM	SC	DOC
-0.3	8.1	2.5	43.5	73.3	2.7	18.8	40.6	0.5	11.5	

**HOMOZYGOUS POLLED**

# HIGHLAND Yearling Limousin-Bulls




**Ref** RPY Paynes Signal 6S

SIRE OF LOTS 1, 3, 4, 5, 26, 28, 29, 31, 35, 37, 42 & 48



**5** HSF Where's Waldo

**5** **HSF WHERE'S WALDO**

21 JANUARY 2009 • TCM 53W • CXM4073191

BLACK • 71% • DOUBLE POLLED

RPY PAYNES SIGNAL 6S ROMN JUSTICE  
CPM0177171 GREENWOODPOLLEDHIPPIYHOP

HSF TIGER LILY HIGHLAND NEMO  
CXF4072663 ANGUS

BW	Adj.WW	Adj.YW	EOT Wt/Feb 1	DAM
102	676	1150	1104	2

EPD'S	Gest	CE	BW	WW	YW	MCE	Mik	TM	SC	DOC
0.4	6.4	3.0	49.8	81.5	2.1	22.8	47.7	0.6	12.3	



**6** HSF Wind Me Up

**6** **HSF WIND ME UP**

22 JANUARY 2009 • TCM 58W • CPM0195837

BLACK • 92% PUREBRED • POLLED

AUTO DOLLAR GENERAL 122R LVLS SECRET WEAPON 4408K  
NPM1794135 AUTO KYRIA 232K

HIGHLAND ROMANCE TNGC REDMAN  
CPF0173998 HIGHLAND KNOW HOW

BW	Adj.WW	Adj.YW	EOT Wt/Feb 1	DAM
95	642	1162	1171	4

EPD'S	Gest	CE	BW	WW	YW	MCE	Mik	TM	SC	DOC
-2.3	4.9	2.9	59.4	110.5	4.0	26.4	56.1	0.3	8.7	



**7** Highland Wedding Crasher

**7** **HIGHLAND WEDDING CRASHER**

23 JANUARY 2009 • AGM 1W • CPM0195894

RED • 91% PUREBRED • HOMO POLLED

MAGS TOM JONES KRVN NASKAR 013N  
NPM1880226 MINE PLD QUEEN SHEBA 9006J

MAGS TOUCH OF CLASS CARROUSELS PEAK POWER  
NPF1877566 MAGS MANDA

BW	Adj.WW	Adj.YW	EOT Wt/Feb 1	DAM
76	660	1007	966	2

EPD'S	Gest	CE	BW	WW	YW	MCE	Mik	TM	SC	DOC
-1.3	2.2	0.6	36.3	70.9	2.5	23.0	41.2	0.8	NA	

**HOMOZYGOUS  
POLLED**



# HIGHLAND

## Yearling Limousin Bulls



**Ref** HSF Wat-Cha Swingers Club

SIRE OF LOTS 9 & 22



**8** HSF Whistler

**8** **HSF WHISTLER**  
 23 JANUARY 2009 • TCM 60W • CPM0195819  
 BLACK • 94% PUREBRED • HOMO POLLED

MAGS SASQUATCH NPM1841936	EXLR NEW GENERATION 071M MAGS FRUITFUL 487M	<b>HOMOZYGOUS POLLED</b>
HIGHLAND NATALIE CPF0159162	EXLR POLLED AUSTIN 265J NP VIDALIA	

BW	Adj. WW	Adj. YW	EOT Wt/Feb 1	DAM
88	572	990	1010	6

EPD'S	Gest	CE	BW	WW	YW	MCE	Mik	TM	SC	DOC
	-0.7	11.6	1.0	38.0	74.2	2.8	26.0	45.0	0.2	17.2



**9** HSF Wake Up Call

**9** **HSF WAKE UP CALL**  
 24 JANUARY 2009 • TCM 61W • CPM0195839  
 DOUBLE BLACK • 93% PUREBRED • DOUBLE POLLED

HSF WAT-CHA SWINGERS CLUB CPM0177897	HIGHLAND PREDATOR WAT-CHA PLAYMATE 1P
---	--

CLGP RAMONA'S EBONY NPF1721529	BLACK DIAMOND QUAIL RUN RAMONA PB
-----------------------------------	--------------------------------------

BW	Adj. WW	Adj. YW	EOT Wt/Feb 1	DAM
102	631	1090	1111	7

EPD'S	Gest	CE	BW	WW	YW	MCE	Mik	TM	SC	DOC
	-1.3	3.6	2.3	43.6	76.6	-1.8	14.8	36.6	0.5	12.7



**10** HSF Wolfman

**10** **HSF WOLFMAN**  
 24 JANUARY 2009 • TCM 63W • CPM0195826  
 BLACK • 92% PUREBRED • POLLED

MNWS FRONTIER 507R NPM1804684	GPFF BLAQUE RULON WELZ MACY 203M
----------------------------------	-------------------------------------

JYF PASSION CPF0165998	ROMAN MADE TO ORDER JYF JAMAICA
---------------------------	------------------------------------

BW	Adj. WW	Adj. YW	EOT Wt/Feb 1	DAM
98	611	1048	1067	5

EPD'S	Gest	CE	BW	WW	YW	MCE	Mik	TM	SC	DOC
	-0.8	6.4	2.4	36.0	76.3	4.6	24.7	42.7	0.9	20.7

# HIGHLAND Yearling Limousin Bulls




**Ref** MAGS Robin Hood

SIRE OF LOTS 12, 13, 14, 15, 20, 21, 23, 24, 46 & 53



**11** HSF Warlock

**11 HSF WARLOCK**  
 27 JANUARY 2009 • TCM 68W • CPM0195840  
 DOUBLE BLACK • 92% PUREBRED • HOMO POLLED

CARROUSLS PURE POWER      GPFF BLAQUE RULON  
 NPM1778258                      TUB FIRST CLASS 666F

HIGHLAND LEATHER N LACE      HIGHLAND JACKSON 5J  
 CPF0142875                      HIGHLAND HARMONY

BW	Adj. WW	Adj. YW	EOT Wt/Feb 1	DAM
92	551	981	922	8

EPD'S Gest CE BW WW YW MCE Mik TM SC DOC  
 -2.0 8.7 0.6 36.5 68.8 3.2 10.4 28.7 0.7 2.0

**HOMOZYGOUS POLLED**



**12** Highland Wide Angle

**12 HIGHLAND WIDE ANGLE**  
 31 JANUARY 2009 • RAM 3W • CPM0195896  
 BLACK • 90% PUREBRED • HOMO POLLED

MAGS ROBIN HOOD                      EF MAIN STAY 541M  
 NPM1799630                      MAGS MATTIE MAY 354M

HIGHLAND RITZY GIRL                      TNGC REDMAN  
 CPF0173567                      PACC POLLED JILL 256J

BW	Adj. WW	Adj. YW	EOT Wt/Feb 1	DAM
70	609	1094	1074	4

EPD'S Gest CE BW WW YW MCE Mik TM SC DOC  
 -1.7 13.1 -0.5 36.0 80.0 4.1 22.6 40.6 0.0 14.4

**HOMOZYGOUS POLLED**



**13** Highland Wellington

**13 HIGHLAND WELLINGTON**  
 2 FEBRUARY 2009 • RAM 4W • CXM4073196  
 HOMO BLACK • 89% • DOUBLE POLLED

MAGS ROBIN HOOD                      EF MAIN STAY 541M  
 NPM1799630                      MAGS MATTIE MAY 354M

EXLR LUVLY 004T                      LESF ASPHALT 9N  
 NPF1866672                      EXLR LUVLY 184F

BW	Adj. WW	Adj. YW	EOT Wt/Feb 1	DAM
89	602	1082	997	2

EPD'S Gest CE BW WW YW MCE Mik TM SC DOC  
 -0.5 7.0 1.4 32.9 71.6 0.9 23.0 39.5 0.1 12.3

**HOMOZYGOUS BLACK**

# HIGHLAND

## Yearling-Limousin Bulls

**14** **HIGHLAND WATCHMAN**

4 FEBRUARY 2009 • AGM 5W • CXM4073197  
HOMO BLACK • 89% • DOUBLE POLLED

MAGS ROBIN HOOD EF MAIN STAY 541M  
NPM1799630 MAGS MATTIE MAY 354M

HIGHLAND SURE THING TNGC REDMAN  
CPF0178093 EXLR LOUANA 51J

BW	Adj. WW	Adj. YW	EOT Wt/Feb 1	DAM
93	665	1132	1082	3

EPD'S	Gest	CE	BW	WW	YW	MCE	Mik	TM	SC	DOC
-2.2	5.5	3.2	48.8	95.5	2.8	25.3	49.7	0.2	16.5	

**HOMOZYGOUS BLACK**



**14** Highland Watchman

**15** **HIGHLAND WILD CARD**

5 FEBRUARY 2009 • RAM 6W • CPM0195897  
BLACK • 90% PUREBRED • HOMO POLLED

MAGS ROBIN HOOD EF MAIN STAY 541M  
NPM1799630 MAGS MATTIE MAY 354M

HIGHLAND STOLENPONEY HIGHLAND MILESTONE  
CPF0179932 TOP MEADOW 24L

BW	Adj. WW	Adj. YW	EOT Wt/Feb 1	DAM
82	667	1082	1036	3

EPD'S	Gest	CE	BW	WW	YW	MCE	Mik	TM	SC	DOC
-1.8	9.0	0.1	36.5	75.9	3.7	23.3	41.6	0.2	14.9	

**HOMOZYGOUS POLLED**



**15** Highland Wild Card



**16** HSF Watchman

**16** **HSF WATCHMAN**

4 FEBRUARY 2009 • TCM 77W • CPM0195843  
BLACK • 92% PUREBRED • DOUBLE POLLED

MAGS SASQUATCH EXLR NEW GENERATION 071M  
NPM1841936 MAGS FRUITFUL 487M

CARROUSELS LATIFA 1280L WULF'S EXPLOSION  
NPF1663548 SFKL POLLED PRECEDENT

BW	Adj. WW	Adj. YW	EOT Wt/Feb 1	DAM
96	650	1074	1064	8

EPD'S	Gest	CE	BW	WW	YW	MCE	Mik	TM	SC	DOC
-2.1	8.9	2.7	45.5	89.2	4.7	22.7	45.5	0.3	22.7	



**17** HSF Warcry

**17** **HSF WARCRY**

6 FEBRUARY 2009 • TCM 87W • CPM0195845  
DOUBLE BLACK • 92% PUREBRED • HOMO POLLED

MNWS FRONTIER 507R GPFF BLAQUE RULON  
NPM1804684 WELZ MACY 203M

CARROUSELS LATIFA 1280L WULF'S EXPLOSION  
NPF1663548 SFKL POLLED PRECEDENT

BW	Adj. WW	Adj. YW	EOT Wt/Feb 1	DAM
92	594	1071	1058	8

EPD'S	Gest	CE	BW	WW	YW	MCE	Mik	TM	SC	DOC
-0.8	5.4	2.6	48.9	93.2	2.3	20.3	44.8	0.6	21.0	

**HOMOZYGOUS POLLED**

18
HSF WAYDOWN

6 FEBRUARY 2009 • TCM 88W • CXM4073193  
DOUBLE BLACK • 48% • DOUBLE POLLED

EXLR POLLED AUSTIN 265J      EXLR POLLED RESOLVE  
NPM1523749                      OAKM LADY 302D

ANGUS

BW	Adj.WW	Adj.YW	EOT Wt/Feb 1	DAM
93	579	982	980	3

EPD'S	Gest	CE	BW	WW	YW	MCE	Mik	TM	SC	DOC
-	-	-	-	-	-	-	-	-	-	-



18
HSF Waydown

19
HSF WATERGATE

7 FEBRUARY 2009 • TCM 91W • CPM0195847  
BLACK • 92% PUREBRED • HOMO POLLED

MAGS SASQUATCH                      EXLR NEW GENERATION 071M  
NPM1841936                              MAGS FRUITFUL 487M

CARROUSELS LATIFA 1280L          WULF'S EXPLOSION  
NPF1663548                              SFKL POLLED PRECEDENT

BW	Adj.WW	Adj.YW	EOT Wt/Feb 1	DAM
102	647	1141	1125	8

HOMOZYGOUS  
POLLED

EPD'S	Gest	CE	BW	WW	YW	MCE	Mik	TM	SC	DOC
-2.1	8.9	3.7	52.2	97.5	4.7	22.7	48.8	0.3	22.7	



19
HSF Watergate



20
Highland Wallstreet

20
HIGHLAND WALLSTREET

9 FEBRUARY 2009 • CMA 7W • CXM4073198  
BLACK • 89% • HOMO POLLED

MAGS ROBIN HOOD                      EF MAIN STAY 541M  
NPM1799630                              MAGS MATTIE MAY 354M

EXLR LUANA 622P                      AUTO BLACK DAKOTA 129J  
NPF1762201                              AUTO LOUANA 280F

BW	Adj.WW	Adj.YW	EOT Wt/Feb 1	DAM
85	706	1151	1120	5

HOMOZYGOUS  
POLLED

EPD'S	Gest	CE	BW	WW	YW	MCE	Mik	TM	SC	DOC
-1.8	6.7	1.4	47.2	93.9	2.9	26.1	49.7	0.4	12.9	



21
Highland Wildwest

21
HIGHLAND WILDWEST

9 FEBRUARY 2009 • RAM 9W • CPM0195898  
BLACK • 91% PUREBRED • HOMO POLLED

MAGS ROBIN HOOD                      EF MAIN STAY 541M  
NPM1799630                              MAGS MATTIE MAY 354M

HIGHLAND SYRIANA                      EXLR POLLED AUSTIN 265J  
CPF0178148                              EXLR TESS 001F

BW	Adj.WW	Adj.YW	EOT Wt/Feb 1	DAM
84	722	1128	1073	3

HOMOZYGOUS  
POLLED

EPD'S	Gest	CE	BW	WW	YW	MCE	Mik	TM	SC	DOC
-1.4	9.0	1.5	47.9	86.0	3.5	24.7	48.7	0.4	12.7	



**22 HSF WARRANT**

9 FEBRUARY 2009 • TCM 100W • CPM0195827  
 HOMO BLACK • 93% PUREBRED • HOMO POLLED

HSF WAT-CHA SWINGERS CLUB HIGHLAND PREDATOR  
 CPM0177897 WAT-CHA PLAYMATE 1P

EXE ROMANCE EXLR NEW GENERATION 071M  
 CPF0176980 EXE JANICE

BW	Adj.WW	Adj.YW	EOT Wt/Feb 1	DAM
88	537	1015	980	4

EPD'S	Gest	CE	BW	WW	YW	MCE	Mik	TM	SC	DOC
-2.4	8.6	1.4	34.0	69.7	2.6	17.3	34.3	0.2	7.9	

**HOMOZYGOUS BLACK POLLED**



**22** HSF Warrant

**23 HIGHLAND WARLORD**

14 FEBRUARY 2009 • RAM 11W • CXM4073204  
 HOMO BLACK • 67% LIM-FLEX • HOMO POLLED

MAGS ROBIN HOOD EF MAIN STAY 541M  
 NPM1799630 MAGS MATTIE MAY 354M

HIGHLAND REBA HIGHLAND NORTHERN LIGHT  
 CXF4072767 HIGHLAND KIBBLE

BW	Adj.WW	Adj.YW	EOT Wt/Feb 1	DAM
92	758	1230	1176	4

EPD'S	Gest	CE	BW	WW	YW	MCE	Mik	TM	SC	DOC
-	-	2.0	46.8	86.4	-	26.5	50	-	14.2	

**HOMOZYGOUS BLACK POLLED**



**23** Highland Warlord

**24 HIGHLAND WAIT A MINUTE**

15 FEBRUARY 2009 • AGM 13W • CPM0195900  
 HOMO BLACK • 90% PUREBRED • DOUBLE POLLED

MAGS ROBIN HOOD EF MAIN STAY 541M  
 NPM1799630 MAGS MATTIE MAY 354M

HIGHLAND ROWENA HIGHLAND MILESTONE  
 CPF0173561 EXLR LOUANA 51J

BW	Adj.WW	Adj.YW	EOT Wt/Feb 1	DAM
80	658	1074	1021	4

EPD'S	Gest	CE	BW	WW	YW	MCE	Mik	TM	SC	DOC
-2.5	8.4	0.8	41.5	82.1	2.2	21.7	42.5	0.2	14.5	

**HOMOZYGOUS BLACK**



**25** HSF Whiplash

**25 HSF WHIPLASH**

17 FEBRUARY 2009 • TCM 135W • CPM0195854  
 RED • 92% PUREBRED • DOUBLE POLLED

ANDERS RICH & FAMOUS ANDERS JAG  
 CPM0173242 CARROUSELS LATIFA 1280L

HIGHLAND LADY BUG COLE FIRST DOWN 46D  
 CPF0144301 EXLR WEEKEND DREAM

BW	Adj.WW	Adj.YW	EOT Wt/Feb 1	DAM
98	633	1103	1061	8

EPD'S	Gest	CE	BW	WW	YW	MCE	Mik	TM	SC	DOC
-1.8	6.3	2.4	47.3	92.1	4.9	17.8	41.5	0.6	NA	

## 26 HSF WISHING WELL

18 FEBRUARY 2009 • TCM 138W • CPM0195855  
RED • 94% PUREBRED • DOUBLE POLLED

RPY PAYNES SIGNAL 6S ROMN JUSTICE  
CPM0177171 GREENWOODPOLLEDHIPPIYHOP

HIGHLAND KNOW HOW WULFS GUARDIAN  
CPF0139428 FTL PRISCILLA

BW	Adj.WW	Adj.YW	EOT Wt/Feb 1	DAM
99	593	1062	1020	9

EPD'S	Gest	CE	BW	WW	YW	MCE	Mik	TM	SC	DOC
-1.7	5.5	2.1	46.4	82.0	2.0	19.1	42.3	0.5	22.4	



26 HSF Wishing Well

## 27 HSF WORKAHOLIC

18 FEBRUARY 2009 • TCM 139W • CXM4073194  
DOUBLE BLACK • 48% LIM-FLEX • HOMO POLLED

EXLR POLLED AUSTIN 265J EXLR POLLED RESOLVE  
NPM1523749 OAKM LADY 302D

HIGHLAND ERROLLINE 74C HIGHLAND UTMOST 22A  
762155 HIGHLAND ERROLLINE 111W

BW	Adj.WW	Adj.YW	EOT Wt/Feb 1	DAM
90	574	1022		16

EPD'S	Gest	CE	BW	WW	YW	MCE	Mik	TM	SC	DOC
-	-	-	-	-	-	-	-	-	-	-

**HOMOZYGOUS POLLED**

## 28 HSF WILL POWER

20 FEBRUARY 2009 • TCM 143W • CPM0195857  
BLACK • 94% PUREBRED

RPY PAYNES SIGNAL 6S ROMN JUSTICE  
CPM0177171 GREENWOODPOLLEDHIPPIYHOP

HIGHLAND KENTUCKY WOMAN WULFS DAWSON  
CPF0139222 HIGHLAND DESIGN

BW	Adj.WW	Adj.YW	EOT Wt/Feb 1	DAM
90	664	1099	1047	9

EPD'S	Gest	CE	BW	WW	YW	MCE	Mik	TM	SC	DOC
-0.6	8.9	1.3	46.1	78.8	3.5	26.2	49.3	0.6	16.8	

## 29 HSF WATCHER

28 FEBRUARY 2009 • TCM 170W • CPM0195820  
RED • 94% PUREBRED • HOMO POLLED

RPY PAYNES SIGNAL 6S ROMN JUSTICE  
CPM0177171 GREENWOODPOLLEDHIPPIYHOP

HIGHLAND RAVEN EXLR LATIGO 29M  
CPF0173551 NP VIDALIA

BW	Adj.WW	Adj.YW	EOT Wt/Feb 1	DAM
84	674	1060	968	4

EPD'S	Gest	CE	BW	WW	YW	MCE	Mik	TM	SC	DOC
-0.4	10.7	0.2	45.1	77.1	3.3	24.8	47.4	0.6	10.6	

**HOMOZYGOUS POLLED**

## 30 HIGHLAND WAKE UP CALL

26 FEBRUARY 2009 • RAM 16W • CPM0195903  
DOUBLE BLACK • 93% PUREBRED • DOUBLE POLLED

MAGS TOM JONES KRVN NASKAR 013N  
NPM1880226 MINE PLD QUEEN SHEBA 9006J

HIGHLAND LORNA DOONE HIGHLAND JACKSON 5J  
CPF0140884 RA PRETTY LADY

BW	Adj.WW	Adj.YW	EOT Wt/Feb 1	DAM
79	661	1047	981	8

EPD'S	Gest	CE	BW	WW	YW	MCE	Mik	TM	SC	DOC
-1.0	8.8	0.9	40.1	76.6	3.2	21.1	41.2	0.6	NA	



29 HSF Watcher

## 31 HSF WARPAINT

28 FEBRUARY 2009 • TCM 171W • CPM0195865  
BLACK • 95% PUREBRED • POLLED

RPY PAYNES SIGNAL 6S ROMN JUSTICE  
CPM0177171 GREENWOODPOLLEDHIPPIYHOP

HIGHLAND KAPPUCCINO EXLR CHISHOLM  
CPF0134143 NP LUV CRUISING

BW	Adj.WW	Adj.YW	EOT Wt/Feb 1	DAM
94	621	1043	974	9

EPD'S	Gest	CE	BW	WW	YW	MCE	Mik	TM	SC	DOC
-1.1	6.3	2.4	41.7	71.5	3.5	21.1	42.0	0.5	8.1	



**32 HSF HSF UNIVERSAL SOLDIER**  
**9 JANUARY 2008 • TCM 16U • CPM0189083**  
**BLACK • 94% PUREBRED • DOUBLE POLLED**  
 HIGHLAND PREDATOR CPM0164635      HIGHLAND PREDATOR ANLC KAITLIN 0102K  
 DVFC POLLED HALY 308H NPF1465620      JCL BLACK OUT SPITZ BILLIE LEE 419S

BW	Adj.WW	Adj.YW	DAM
105	744	1139	10

EPD'S	Gest	CE	BW	WW	YW	MCE	Mik	TM	SC	DOC
-2.6	4.8	3.7	42.9	76.5	-1.5	17.4	38.9	0.1	13.7	



**33 HSF HSF UNEVEN PAVEMENT**  
**10 JANUARY 2008 • TCM 19U • CPM0188596**  
**DOUBLE BLACK • 94% PUREBRED • DOUBLE POLLED**  
 HIGHLAND PLD PLOW MAN CPM0167478      EXLR POLLED AUSTIN 265J HIGHLAND SWEET LEAF  
 HIGHLAND PLD PROMISE CPF0167092      EXLR MONEY TRAIL 7129K RA PRETTY LADY

BW	Adj.WW	Adj.YW	DAM
97	569	1011	4

EPD'S	Gest	CE	BW	WW	YW	MCE	Mik	TM	SC	DOC
-2.1	3.2	5.1	49.4	80.3	0.8	19.0	43.7	0.4	6.1	



**34 HSF HIGHLAND ULTIMATE MAN**  
**23 JANUARY 2008 • RAM 4U • CPM0190216**  
**RED • 93% PUREBRED**  
 EXLR RELOAD 230R NPM1827000      JCL LODESTAR 27L KRVN NORRA 179N  
 HIGHLAND SYRIANA CPF0118148      EXLR POLLED AUSTIN 265J EXLR TESS 001F

BW	Adj.WW	Adj.YW	DAM
88	658	988	2

EPD'S	Gest	CE	BW	WW	YW	MCE	Mik	TM	SC	DOC
-2.1	6.3	3.9	49.5	79.9	3.8	29.9	47.7	0.6	13.7	



**35 HSF HSF UNTYPICAL**  
**30 JANUARY 2008 • TCM 53U • CPM0188601**  
**RED • 94% PUREBRED • HOMO POLLED**  
 RPY PAYNES SIGNAL 6S CPM0177171      ROMN JUSTICE GREENWOODPOLLEDHIPPIYHOP  
 HSF SISTER SINISTER CPF0179079      HIGHLAND PREDATOR RWK NEW ORLEANS

BW	Adj.WW	Adj.YW	DAM
85	643	1065	2

EPD'S	Gest	CE	BW	WW	YW	MCE	Mik	TM	SC	DOC
-1.8	7.6	1.0	43.5	72.3	3.3	16.2	38.0	0.5	12.4	

**HOMOZYGOUS POLLED**

**36** *HSF* **HSF UNDERWRAPS**

3 FEBRUARY 2008 • TCM 57U • CPM0188602  
 BLACK • 94% PUREBRED • DOUBLE POLLED

ANDERS RICH & FAMOUS CPM0173242      ANDERS JAG CARROUSELS LATIFA 1280L

HSF RUBARB PIE CPF0175301      EDW NO MONEY DOWN RWK NEW ORLEANS

BW	Adj.WW	Adj.YW	DAM
90	553	1083	3

EPD'S	Gest	CE	BW	WW	YW	MCE	Mik	TM	SC	DOC
	-1.5	4.3	3.9	42.2	86.4	2.9	11.8	33.0	0.2	NA



**36** HSF Underwraps

**37** *HSF* **HSF UNDERGROUND**

12 FEBRUARY 2008 • TCM 79U • CPM0188607  
 BLACK • 95% PUREBRED • POLLED

RPY PAYNES SIGNAL 6S CPM0177171      ROMN JUSTICE GREENWOODPOLLEDHIPPIYHOP

HIGHLAND JUDE 89J CPF0125848      EXLR CHISHOLM HIGHLAND FINALE

BW	Adj.WW	Adj.YW	DAM
98	619	1118	9

EPD'S	Gest	CE	BW	WW	YW	MCE	Mik	TM	SC	DOC
	-1.2	7.2	3.1	44.2	76.0	5.0	23.2	45.3	0.6	9.0



**37** HSF Underground

**38** *HSF* **HSF UNCERTAIN SMILE**

16 FEBRUARY 2008 • TCM 94U • CPM0188609  
 DOUBLE BLACK • 93% PUREBRED • HOMO POLLED

ANDERS RICH & FAMOUS CPM0173242      ANDERS JAG CARROUSELS LATIFA 1280L

RWK NEW ORLEANS CPF0162636      TMF KODIAK 210K BODELL HOCUS POCUS

**HOMOZYGOUS POLLED**

BW	Adj.WW	Adj.YW	DAM
81	630	1144	5

EPD'S	Gest	CE	BW	WW	YW	MCE	Mik	TM	SC	DOC
	-2.0	5.9	2.3	41.1	82.9	3.9	10.2	30.8	0.3	NA



**38** HSF Uncertain Smile

**39** *HSF* **HSF UNCLE KRACKER**

24 FEBRUARY 2008 • TCM 128U • CPM0188612  
 DOUBLE BLACK • 95% PUREBRED

ANDERS RICH & FAMOUS CPM0173242      ANDERS JAG CARROUSELS LATIFA 1280L

PACC POLLED JILL 256J NPF1505595      BLACK CAT DHAN PACC BRADY'S KANGA 141F

BW	Adj.WW	Adj.YW	DAM
101	683	1273	9

EPD'S	Gest	CE	BW	WW	YW	MCE	Mik	TM	SC	DOC
	-1.4	4.2	5.3	58.3	108.5	1.8	13.5	42.7	0.1	NA



# HIGHLAND

## 2-Year-Old-Limousin-Bulls



**Ref** EXLR Reload 230R

SIRE OF LOTS 34, 41, 50 & 52



**40** Highland Urban Justice



**41** Highland Upload



**42** HSF Unmasked

**40 HSF HIGHLAND URBAN JUSTICE**

24 FEBRUARY 2008 • CMA 13U • CPM0190201  
 DOUBLE BLACK • 92% PUREBRED • DOUBLE POLLED

AUTO DOLLAR GENERAL 122R LVLS SECRET WEAPON 4408K  
 NPM1794135 AUTO KYRIA 232K

AUTO LENORA 286L EXLR DAKOTA 353G  
 NPF1658182 AUTO ELITE 270F

BW	Adj.WW	Adj.YW	DAM
78	677	1015	7

EPD'S	Gest	CE	BW	WW	YW	MCE	Mik	TM	SC	DOC
	-0.8	5.1	0.6	51.8	89.7	3.4	31.0	56.9	0.6	8.1

**41 HSF HIGHLAND UPLOAD**

24 FEBRUARY 2008 • RAM 15U • CXM4072932  
 HOMO BLACK • 46% LIM-FLEX • HOMO POLLED

EXLR RELOAD 230R JCL LODESTAR 27L  
 NPM1827000 KRNV NORRA 179N

HIGHLAND ERROLLINE 16G EXAR RITO 505D  
 CANAN900023 HIGHLAND ERROLLINE 61C

**HOMOZYGOUS BLACK POLLED**

BW	Adj.WW	Adj.YW	DAM
102	643	1209	11

EPD'S	Gest	CE	BW	WW	YW	MCE	Mik	TM	SC	DOC
	-1.4	NA	2.7	44.4	91.6	NA	29.2	51.4	0.3	NA

**42 HSF HSF UNMASKED**

28 FEBRUARY 2008 • TCM 148U • CPM0188616  
 BLACK • 95% PUREBRED • POLLED

RPY PAYNES SIGNAL 6S ROMN JUSTICE  
 CPM0177171 GREENWOODPOLLEDHIPPIYHOP

HIGHLAND KAPPUCCINO EXLR CHISHOLM  
 CPF0134143 NP LUV CRUISING

BW	Adj.WW	Adj.YW	DAM
90	605	1051	8

EPD'S	Gest	CE	BW	WW	YW	MCE	Mik	TM	SC	DOC
	-1.2	6.7	2.0	38.4	65.4	3.6	21.1	40.3	0.5	8.1

**43 HSF UPTOWN COWBOY**

29 FEBRUARY 2008 • TCM 150U • CPM0189583  
 BLACK • 92% PUREBRED • DOUBLE POLLED

CLLL NEW DIRECTION 394P      GPFF BLAQUE RULON  
 NPM1756969                      PRRK EXTRA BLAQUE STAR

HIGHLAND POP STAR              EXLR LATIGO 29M  
 CPF0167307                        NP VIDALIA

BW	Adj.WW	Adj.YW	DAM
105	560	1038	4

EPD'S	Gest	CE	BW	WW	YW	MCE	Mik	TM	SC	DOC
0.0	3.0	4.1	42.9	77.7	-1.4	19.7	41.2	0.4	15.6	



**43** HSF Uptown Cowboy

**44 HSF UNLEASHED**

1 MARCH 2008 • TCM 154U • CPM0189109  
 BLACK • 93% PUREBRED • DOUBLE POLLED

AUTO DOLLAR GENERAL 122R      LVLS SECRET WEAPON 4408K  
 NPM1794135                              AUTO KYRIA 232K

WAT-CHA PLAYMATE 1P              EXLR DAKOTA 353G  
 CPF0166592                              RPY SHANIA

BW	Adj.WW	Adj.YW	DAM
92	617	1190	4

EPD'S	Gest	CE	BW	WW	YW	MCE	Mik	TM	SC	DOC
-1.4	4.0	0.5	50.2	93.0	3.6	27.5	52.6	0.6	5.8	



**44** HSF Unleashed



**45** HSF Union Job

**45 HSF UNION JOB**

7 MARCH 2008 • TCM 167U • CXM4072838  
 BLACK • 48% LIM-FLEX • HOMO POLLED

HIGHLAND BANDO 9S                      S A V 5175 BANDO 1024  
 1335119    HIGHLAND TIP TOP 103J

HIGHLAND HARMONY                      MINE TELLURIDE  
 CPF0121215                                      LIMOLYN BLACK FUTURE

BW	Adj.WW	Adj.YW	DAM
94	608	1213	10

EPD'S	Gest	CE	BW	WW	YW	MCE	Mik	TM	SC	DOC
-	-	-	-	-	-	-	-	-	-	-

**HOMOZYGOUS POLLED**



**46** Highland Ultimatum

**46 HIGHLAND ULTIMATIUM**

9 MARCH 2008 • RAM 24U • CXM4072931  
 HOMO BLACK • 43% LIM-FLEX • HOMO POLLED

MAGS ROBIN HOOD                      EF MAIN STAY 541M  
 NPM1799630                                      MAGS MATTIE MAY 354M

HIGHLAND MS BLACKBIRD 122P      EXAR JUSTICE 9799  
 CANAN1228696                                  HIGHLAND MS BLACKBIRD 57G

BW	Adj.WW	Adj.YW	DAM
86	652	1239	4

EPD'S	Gest	CE	BW	WW	YW	MCE	Mik	TM	SC	DOC
-0.9	-	0.4	45.8	94.9	-	23.0	45.9	0.1	-	-

**HOMOZYGOUS BLACK POLLED**



### 47 HSF U ALREADY KNOW

17 MARCH 2008 • TCM 185U • CPM0188622  
HOMO BLACK • 95% PUREBRED • DOUBLE POLLED

EXLR POLLED AUSTIN 265J NPM1523749  
EXLR POLLED RESOLVE OAKM LADY 302D

HIGHLAND NON-STOP CPF 0160012  
HIGHLAND PLATNIUM HIGHLAND BLK LATIFA

BW	Adj.WW	Adj.YW	DAM
84	641	1067	5

EPD'S	Gest	CE	BW	WW	YW	MCE	Mik	TM	SC	DOC
	-1.4	12.1	1.0	46.5	83.4	3.1	24.1	47.4	0.4	11.0

**HOMOZYGOUS BLACK**



47 HSF U Already Know

### 48 HSF UNHINGED

22 MARCH 2008 • TCM 192U • CPM0188624  
RED • 95% PUREBRED • DOUBLE POLLED

RPY PAYNES SIGNAL 6S CPM0177171  
ROMN JUSTICE GREENWOODPOLLEDHIPPIYHOP

HIGHLAND SHILOH CPF0178138  
HIGHLAND MILESTONE HIGHLAND DESIGN

BW	Adj.WW	Adj.YW	DAM
82	607	1058	2

EPD'S	Gest	CE	BW	WW	YW	MCE	Mik	TM	SC	DOC
	-0.7	9.0	1.1	34.1	56.1	4.4	17.7	38.4	0.4	14.2

**HOMOZYGOUS POLLED**



48 HSF Unhinged

### 49 HSF UNDER YOUR SPELL

27 MARCH 2008 • TCM 194U • CPM0188625  
BLACK • 93% PUREBRED • HOMO POLLED

ANDERS RICH & FAMOUS CPM0173242  
ANDERS JAG CARROUSELS LATIFA 1280L

HSF RASPBERRY BERET CPF0175296  
EXLR POLLED RESOLVE LIMOLYN POLLED FAY

BW	Adj.WW	Adj.YW	DAM
87	597	1138	3

EPD'S	Gest	CE	BW	WW	YW	MCE	Mik	TM	SC	DOC
	-1.3	10.9	1.7	33.8	66.7	2.3	11.3	28.2	0.2	NA

**HOMOZYGOUS POLLED**



50 Highland Ulysse

### 50 HIGHLAND ULYSSE

27 MARCH 2008 • AGM 36U • CPM0190195  
RED • 93% PUREBRED • HOMO POLLED

EXLR RELOAD 230R NPM1827000  
JCL LODESTAR 27L KRVN NORRA 179N

LIMOLYN PANDORA CPF0164235  
HIGHLAND MILESTONE LIMOLYN HOYA

BW	Adj.WW	Adj.YW	DAM
98	775	1260	4

EPD'S	Gest	CE	BW	WW	YW	MCE	Mik	TM	SC	DOC
	-2.0	3.2	6.2	52.9	93.5	3.0	19.7	46.2	0.3	10.8

# HIGHLAND

## 2-Year Old Limousin Bulls



**51** **HSF ULTIMATUM**

28 MARCH 2008 • TCM 196U • CPM0188627  
 HOMO BLACK • 94% PUREBRED • DOUBLE POLLED

ANDERS RICH & FAMOUS ANDERS JAG  
 CPM0173242 CARROUSELS LATIFA 1280L

HIGHLAND MORAINÉ EXLR POLLED AUSTIN 265J  
 CPF0153453 EXLR 018F

BW	Adj. WW	Adj. YW	DAM
104	701	1303	6

EPD'S	Gest	CE	BW	WW	YW	MCE	Mik	TM	SC	DOC
-1.5	2.7	5.5	53.3	97.2	1.0	15.2	41.8	0.2	NA	NA

**HOMOZYGOUS BLACK**



**51** HSF Ultimatum

**52** **HIGHLAND URBAN LEGEND**

30 MARCH 2008 • AGM 38U • CPM0190196  
 BLACK • 92% PUREBRED • POLLED

EXLR RELOAD 230R JCL LODESTAR 27L  
 NPM1827000 KRVN NORRA 179N

HIGHLAND MINUTE MAID EXLR NORTHLANDER  
 CPF0154636 HIGHLAND JASMINE

BW	Adj. WW	Adj. YW	DAM
99	827	1165	6

EPD'S	Gest	CE	BW	WW	YW	MCE	Mik	TM	SC	DOC
-1.7	4.1	3.3	50.2	83.0	1.5	24.8	49.9	0.6	11.5	



**52** Highland Urban Legend

**53** **HIGHLAND URANIUM**

5 APRIL 2008 • RAM 40U • CPM0190223  
 BLACK • 93% PUREBRED • POLLED

MAGS ROBIN HOOD EF MAIN STAY 541M  
 NPM1799630 MAGS MATTIE MAY 354M

EAFF POLLED GOLD LILY281K MINE GOLD MEDAL 436G  
 NFF1591007 EAFF MS SALLY ANN 158


BW	Adj. WW	Adj. YW	DAM
84	676	1110	8

EPD'S	Gest	CE	BW	WW	YW	MCE	Mik	TM	SC	DOC
-0.8	7.9	1.1	38.6	77.0	2.7	24.7	44.0	0.2	11.8	



**53** Highland Uranium

*All updated information including sale day weights and scrotal circumferences will be available sale day on a supplement sheet. All bulls will be Semen Tested.*





# HIGHLAND

## Yearling-Angus-Bulls

### 54 *H of H* HIGHLAND LOOKOUT 211U

27 DECEMBER 2008 • TCM 211U • 1519979

B C LOOKOUT 7024  
1359327

OCC LEGEND 616L  
GIBBET HILL MIGNONNE E37

HIGHLAND BARBARA 37T  
1418050

DRR TEXMAN 382P  
HIGHLAND BARBARA 11R

BW	Adj.WW	Adj.YW	EOT Wt/Feb 1	DAM
80	663	1269	1132	2

EPD'S	BW	WW	YW	Milk	TM	YG
	1.0	40	74	17	37	34



54

Highland Lookout 211U

### 55 *H of H* HIGHLAND LOOKOUT 2W

1 JANUARY 2009 • TCM 2W • 1519981

B C LOOKOUT 7024  
1359327

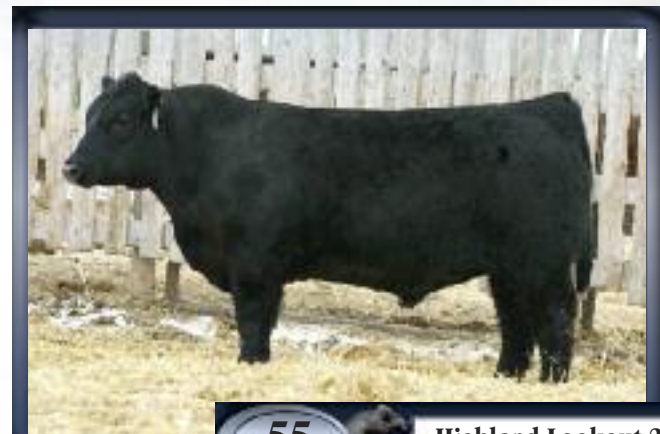
OCC LEGEND 616L  
GIBBET HILL MIGNONNE E37

HIGHLAND ERROLLINE 119T  
1411726

DIAMOND T WARRIOR 01'02  
HIGHLAND ERROLLINE 119M

BW	Adj.WW	Adj.YW	EOT Wt/Feb 1	DAM
95	684	1326	1200	2

EPD'S	BW	WW	YW	Milk	TM	YG
	3.5	44	78	16	38	34



55

Highland Lookout 2W



56

Highland Attraction 19W



57

Highland Attraction 28W

### 56 *H of H* HIGHLAND ATTRACTION 19W

9 JANUARY 2009 • TCM 19W • 1519988

DUFF NEW ATTRACTION 6110  
1426175

OCC GENESIS 872G  
OCC DIXIE ERICA 814G

HIGHLAND PRIDE ABERDEEN 8R  
1281145

B/R NEW FRONTIER 095  
HIGHLAND PRIDE OF ABERDEEN 129

BW	Adj.WW	Adj.YW	EOT Wt/Feb 1	DAM
99	660	1361	1274	4

EPD'S	BW	WW	YW	Milk	TM	YG
	4.7	41	70	12	33	29

### 57 *H of H* HIGHLAND ATTRACTION 28W

12 JANUARY 2009 • TCM 28W • 1519991

DUFF NEW ATTRACTION 6110  
1426175

OCC GENESIS 872G  
OCC DIXIE ERICA 814G

HIGHLAND BOSTA BLACKBIRD  
147P 1228705

EXAR JUSTICE 9799  
HIGHLAND BOSTA BLACKBIRD 39K

BW	Adj.WW	Adj.YW	EOT Wt/Feb 1	DAM
101	704	1243	1185	5

EPD'S	BW	WW	YW	Milk	TM	YG
	4.2	39	65	15	35	25

# HIGHLAND Yearling Angus Bulls



## 58 *H&F* HIGHLAND ATTRACTION 38W

15 JANUARY 2009 • TCM 38W • 1519992

DUFF NEW ATTRACTION 6110  
1426175

OCC GENESIS 872G  
OCC DIXIE ERICA 814G

HIGHLAND EVENING TINGE 49R  
1294867

B/R NEW FRONTIER 095  
HIGHLAND EVENING TINGE 33H

BW	Adj. WW	Adj. YW	EOT Wt/Feb 1	DAM
88	674	1221	1134	4

EPD'S	BW	WW	YW	Milk	TM	YG
	2.3	38	70	17	36	32



**58** Highland Attraction 38W

## 59 *H&F* HIGHLAND BRAVEHEART 66W

26 JANUARY 2009 • TCM 66W • 1528477

HIGHLAND WARRIOR187T  
1411724

DIAMOND T WARRIOR 01'02  
HIGHLAND EVENING TINGE 27L

HIGHLAND BLACKBIRD 149K  
1026805

BT GALVANIZER 240G  
HIGHLAND BLACKBIRD 51E

BW	Adj. WW	Adj. YW	EOT Wt/Feb 1	DAM
90	646	1132	1020	9

EPD'S	BW	WW	YW	Milk	TM	YG
	2.0	32	57	18	34	25

## 60 *H&F* HIGHLAND BRAVEHEART 83W

5 FEBRUARY 2009 • TCM 83W • 1528479

HIGHLAND WARRIOR187T  
1411724

DIAMOND T WARRIOR 01'02  
HIGHLAND EVENING TINGE 27L

HIGHLAND BARBARA 5R  
1281109

ROTHS MILLCREEK UNIQUE  
HIGHLAND BARBARA 19F

BW	Adj. WW	Adj. YW	EOT Wt/Feb 1	DAM
97	631	1283	1103	4

EPD'S	BW	WW	YW	Milk	TM	YG
	3.8	36	64	18	36	29

## 61 *H&F* HIGHLAND BRAVEHEART 84W

5 FEBRUARY 2009 • TCM 84W • 1528480

HIGHLAND WARRIOR187T  
1411724

DIAMOND T WARRIOR 01'02  
HIGHLAND EVENING TINGE 27L

HIGHLAND GEORGINA 7R  
1281133

ROTHS MILLCREEK UNIQUE  
HIGHLAND GEORGINA 126M

BW	Adj. WW	Adj. YW	EOT Wt/Feb 1	DAM
95	610	1197	1055	3

EPD'S	BW	WW	YW	Milk	TM	YG
	3.8	36	67	20	37	34

## 62 *H&F* HIGHLAND BRAVEHEART 132W

17 FEBRUARY 2009 • TCM 132W • 1528485

HIGHLAND WARRIOR187T  
1411724

DIAMOND T WARRIOR 01'02  
HIGHLAND EVENING TINGE 27L

HIGHLAND BLACKBIRD 195R  
1335168

K G POWER DESIGN  
HIGHLAND BLACKBIRD 108P

BW	Adj. WW	Adj. YW	EOT Wt/Feb 1	DAM
92	644	1221	1026	3

EPD'S	BW	WW	YW	Milk	TM	YG
	2.3	37	70	23	42	34



**Ref** DUFF New Attraction 6110  
SIRE OF LOTS 56, 57 & 58



**Ref** B C Lookout 7024  
SIRE OF LOTS 54 & 55



**63 HIGHLAND TRACTION 10U**

6 JANUARY 2008 • TCM 10U • 1446274

DMM POSI-TRACTION 57P  
1234216

DMM TRACTION 109J  
DMM MISS ESSENCE 90K

HIGHLAND GEORGINA 193R  
1335129

S A V 5175 BANDO 1024  
HIGHLAND GEORGINA 126M

BW	Adj.WW	Adj.YW	DAM
98	625	1243	2

EPD'S	BW	WW	YW	Milk	TM	YG
	4.9	41	74	19	40	33

**64 HIGHLAND TRACTION 29U**

12 JANUARY 2008 • TCM 29U • 1446277

DMM POSI-TRACTION 57P  
1234216

DMM TRACTION 109J  
DMM MISS ESSENCE 90K

HIGHLAND GEORGINA 126M  
1123973

HIGHLAND EXCEL 48J  
HIGHLAND GEORGINA 38H

BW	Adj.WW	Adj.YW	DAM
103	641	1206	6

EPD'S	BW	WW	YW	Milk	TM	YG
	6.0	36	62	18	36	26



**63** Highland Traction 10U



**64** Highland Traction 29U

**65 HIGHLAND STEELER 56U**

2 FEBRUARY 2008 • TCM 56U • 1446286

HIGHLAND BANDO 9S  
1335119

S A V 5175 BANDO 1024  
HIGHLAND TIP TOP 103J

HIGHLAND ERROLLINE 119M  
1123976

HIGHLAND EXCEL 48J  
HIGHLAND ERROLLINE 11J

BW	Adj.WW	Adj.YW	DAM
91	626	1205	6

EPD'S	BW	WW	YW	Milk	TM	YG
	2.9	32	55	13	29	23

**66 HIGHLAND STEELER 138U**

26 FEBRUARY 2008 • TCM 138U • 1446300

HIGHLAND BANDO 9S  
1335119

S A V 5175 BANDO 1024  
HIGHLAND TIP TOP 103J

HIGHLAND EVENING TINGE 27L  
1072325

NORTHERN IMPROVEMENT 4480  
HIGHLAND EVENING TINGE 20J

BW	Adj.WW	Adj.YW	DAM
89	654	1236	7

EPD'S	BW	WW	YW	Milk	TM	YG
	2.7	33	61	20	37	28

**67 HIGHLAND STEELER 174U**

10 MARCH 2008 • TCM 174U • 1446306

HIGHLAND BANDO 9S  
1335119

S A V 5175 BANDO 1024  
HIGHLAND TIP TOP 103J

HIGHLAND GEORGINA 39P  
1228700

BR MIDLAND 1178822  
HIGHLAND GEORGINA 17J

BW	Adj.WW	Adj.YW	DAM
94	532	1314	4

EPD'S	BW	WW	YW	Milk	TM	YG
	4.7	38	68	10	29	30



**66** Highland Steeler 138U

# HIGHLAND 2-Year-Old-Angus-Bulls



**68** **HIGHLAND SEAHAWK 175U**

10 MARCH 2008 • TCM 175U • 1446307

HIGHLAND SPARTAN 75S 1335102      DIAMOND WARRIOR 01'02  
HIGHLAND ERROLLINE 16A

HIGHLAND BIRD 4S 1360136      S A V 5175 BANDO 1024  
HIGHLAND BLACKBIRD 149K

BW	Adj.WW	Adj.YW	DAM
92	650	1405	2

EPD'S	BW	WW	YW	Milk	TM	YG
	3.8	39	69	15	34	30



**68** Highland Seahawk 175U



**69** Highland Seahawk 200U

**69** **HIGHLAND SEAHAWK 200U**

31 MARCH 2008 • TCM 200U • 1446309

HIGHLAND SPARTAN 75S 1335102      DIAMOND WARRIOR 01'02  
HIGHLAND ERROLLINE 16A

HIGHLAND BARBARA 142N 1171843      HIGHLAND NORTHERN LIGHT 57L  
HIGHLAND BARBARA 38K

BW	Adj.WW	Adj.YW	DAM
98	655	1367	

EPD'S	BW	WW	YW	Milk	TM	YG
	4.1	44	76	18	40	32

# HIGHLAND Igenity - Genetic Testing



Through the Canadian Limousin Association's "SmarTag", igenity profiling involves genetics or DNA testing. Chromosomes making up DNA determines the external and internal makeup of an individual. This year all bulls are tested for homozygous polled and homozygous black (where relative) and for the carcass traits of: tenderness, fat thickness, yield grade, ribeye area, carcass weight, quality grade, and marbling score. We, at Highland, think that it is really important that we can tell you whether a bull will sire all black or all polled calves. We also believe the carcass traits should be important because ultimately your calves will be fed by someone and if they perform well in the feedlot or on the rail, those calves will be easily source verified and as a result buyers will be seeking out ranches that produce these desirable calves.

- Homozygous Polled** - A bull with this trait will only sire polled calves, even when bred to horned cows.
- Homozygous Black** - A bull with this trait will only sire black calves, even when bred to mixed color cows.
- Tenderness** - Represents an animals genetic potential for tenderness with "10" being the most tender.
- Fat Thickness** - Lower igenity profile scores indicate less external fat, while higher scores reflect more external fat.
- Yield Grade** - Lean yield is an estimation of the percentage of the carcass that is red meat - this is not dressing percentage. Lower igenity scores reflect a higher percent of red meat yield. Higher igenity scores reflect lower red meat yield.
- Ribeye Area** - Lower igenity profile scores reflect smaller ribeye areas, with higher scores reflection larger ribeye areas.
- Quality Grade** - Higher scores are more likely to fit into prime grades. The igenity profile reflects the percent AAA.
- Marbling Score** - Canada AAA has the same minimum marbling requirement as USDA Choice. Marbling points indicate how much intramuscular fat is present in the carcasses. and thus propensity to grade Canada AAA.



Lot	Tattoo	Tenderness	Fat Thickness	Yeild Grade	Ribeye Area	Quality Grade	Marbling Score	Coat Color	Polled Horned	Lot	Tattoo	Tenderness	Fat Thickness	Yeild Grade	Ribeye Area	Quality Grade	Marbling Score	Coat Color	Polled Horned
<b>LIMOUSIN</b>																			
1	TCM 7W	4	7	5	5	6	6	Black	Polled	42	TCM 148U	6	8	7	5	7	7	Black	Polled
2	TCM 25W	3	7	4	5	7	7	Black	Homo-Pol	43	TCM 150U	3	6	6	6	6	6	Black	Polled
3	TCM 48W	4	6	5	4	5	5	Black	Polled	44	TCM 154U	4	5	6	4	9	9	Black	Polled
4	TCM 51W	4	7	6	5	6	6	Black	Homo-Pol	45	TCM 167U	5	6	6	5	8	8	Black	Homo-Pol
5	TCM 53W	5	6	6	6	5	5	Black	Inc. Pol	46	RAM 24U	5	7	6	5	6	6	Homo-BI	Homo-Pol
6	TCM 58W	4	7	7	5	7	7	Black	Polled	47	TCM 185U	1	7	6	5	6	6	Homo-BI	Polled
7	AGM 1W	4	4	5	4	5	5	Red	Homo-Pol	48	TCM 192U	6	7	5	5	6	6	Red	Polled
8	TCM 60W	4	6	5	5	5	5	Black	Homo-Pol	49	TCM 194U	4	5	5	4	6	6	Black	Homo-Pol
9	TCM 61W	4	5	6	4	6	6	Black	Polled	50	AGM 36U	4	6	6	5	7	8	Red	Homo-Pol
10	TCM 63W	4	5	7	4	6	6	Black	Polled	51	TCM 196U	4	5	6	4	6	6	Homo-BI	Polled
11	TCM 68W	3	5	5	6	7	7	Black	Homo-Pol	52	AGM 38U	4	6	7	5	7	8	Black	Polled
12	RAM 3W	4	6	7	5	6	6	Black	Homo-Pol	53	RAM 40U	4	6	5	7	5	6	Black	Polled
13	RAM 4W	4	6	7	6	6	6	Homo-BI	Polled	<b>ANGUS</b>									
14	AGM 5W	6	5	6	6	5	5	Homo-BI	Polled	54	TCM 211U	9	4	6	5	7	7		
15	RAM 6W	3	5	6	6	7	7	Black	Homo-Pol	55	TCM 2W	7	6	7	4	7	7		
16	TCM 77W	4	5	6	7	6	6	Homo-BI	Polled	56	TCM 19W	4	5	6	4	9	9		
17	TCM 87W	4	5	5	6	6	6	Black	Homo-Pol	57	TCM 28W	7	5	6	4	7	7		
18	TCM 88W	3	7	5	3	5	5	Black	Inc. Pol	58	TCM 38W	4	5	5	6	7	7		
19	TCM 91W	4	5	5	6	5	5	Black	Homo-Pol	59	TCM 66W	6	4	5	5	7	7		
20	CMA 7W	4	6	7	7	6	6	Black	Homo-Pol	60	TCM 83W	7	5	6	6	7	7		
21	RAM 9W	1	5	5	5	6	6	Black	Homo-Pol	61	TCM 84W	6	5	5	6	6	6		
22	TCM 100W	4	6	6	7	8	8	Homo-BI	Homo-Pol	62	TCM 132W	6	5	5	4	6	6		
23	RAM 11W	4	8	7	6	7	7	Homo-BI	Homo-Pol	63	TCM 10U	4	5	6	6	8	8		
24	AGM 13W	4	7	7	6	6	6	Homo-BI	Polled	64	TCM 29U	6	6	7	6	7	7		
25	TCM 135W	7	4	4	5	5	5	Red	Polled	65	TCM 56U	3	5	6	4	8	8		
26	TCM 138W	4	6	6	6	4	4	Red	Polled	66	TCM 138U	7	6	7	4	7	7		
27	TCM 139W	7	4	4	5	6	6	Black	Homo-Pol	67	TCM 174U	3	6	7	5	8	8		
28	TCM 143W	6	8	6	5	7	7	Black	Polled	68	TCM 175U	7	6	7	3	8	8		
29	TCM 170W	4	5	5	5	6	6	Red	Homo-Pol	69	TCM 200U	10	6	7	3	7	7		
30	RAM 16W	7	6	6	5	5	5	Black	Polled										
31	TCM 171W	6	7	5	5	7	7	Black	Polled										
32	TCM 16U	4	5	5	6	6	7	Black	Polled										
33	TCM 19U	6	4	5	6	4	4	Black	Polled										
34	RAM 4U	3	5	5	5	4	5	Red	Horned										
35	TCM 53U	4	7	4	7	6	6	Red	Homo-Pol										
36	TCM 57U	6	6	7	6	6	6	Black	Polled										
37	TCM 79U	6	6	6	6	6	6	Black	Inc. Pol										
38	TCM 94U	3	6	7	5	6	6	Black	Homo-Pol										
39	TCM 128U	7	4	4	6	5	5	Black	Horned										
40	CMA 13U	4	6	7	5	7	8	Black	Polled										
41	RAM 15U	4	6	6	4	6	7	Homo-BI	Homo-Pol										

### Igenity Information

The information printed in the catalog is known to be true and accurate as provided by the Igenity Labs. Any changes to the information and results after the catalog is printed is the doing of the individual organizations.

## Highland Bulls work for the Lutz's



We (Brad & Shane Lutz) farm 2400 acres of cropland and operate a 1000 head capacity feedlot east of Olds, Alberta. Up to 400 of those calves are produced from our own Angus based cow herd, crossed with Highland Limousin bulls.

Tim and Rob's bulls make calving easy and when we review the kill sheets, it's the Angus/Limousin crosses that yield and grade the best. The packers really like our product and that's why we have bought Highland bulls for the past ten years.

We are proud that our home raised Limousin cross calves, sired by Highland bulls, won the Reserve Champion Pen of Steers at the 2009 Calgary Stampede Fed Beef Expo last July.

See you on March 20th at Highwood!

*Brad & Shane Lutz*



**Looking forward to...**

**HIGHLAND SALE XVI**

**Fall Female Production Sale**

tentatively **September 24, 2010**

Olds Cow Palace, Olds Alberta

**www.highlandstockfarms.com**

Be sure to check the website for updated and additional information

# HIGHLAND STOCK FARMS

PO Box 732  
Bragg Creek, AB  
T0L 0K0



7th Annual

**HIGHLAND**

**BULL SALE**

[www.highlandstockfarms.com](http://www.highlandstockfarms.com)

